

For Research Use Only



CoraLux Violet 510 Anti-Mouse NKp46/NCR1 Rabbit Recombinant Antibody

Catalog Number: **CLV510-98198**

Basic Information

Catalog Number: CLV510-98198	GenBank Accession Number: NM_010746.3	Purification Method: Protein A purification
Size: 100ug , 500 ug/ml	GeneID (NCBI): 17086	CloneNo.: 241804A12
Source: Rabbit	UNIPROT ID: Q8C567	Recommended Dilutions: FC: 0.25 ug per 10 ⁶ cells in a 100 µl suspension
Isotype: IgG	Full Name: natural cytotoxicity triggering receptor 1	Excitation/Emission maxima wavelengths: 410 nm / 501 nm
Immunogen Catalog Number: EG1825	Calculated MW: 37kDa	

Applications

Tested Applications: FC	Positive Controls: FC : mouse splenocytes,
Species Specificity: mouse	

Background Information

NKp46, also known as NCR1 or CD335, is an Ig-like superfamily cell surface receptor that is highly conserved in mammals (PMID: 22021440). NKp46 is a type I transmembrane glycoprotein consisting of two extracellular Ig-like domains, a transmembrane domain, and an intracellular tail (PMID: 9730896). It is expressed on NK cells, rare T-cell subsets and a mucosal population of NKp46+ innate lymphoid cells (PMID: 9730896; 22021440). NKp46 is the major triggering receptor involved in the natural cytotoxicity (PMID: 10359120; 10092106; 15356098).

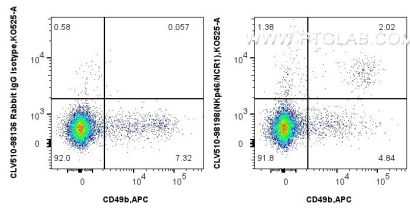
Storage

Storage:
Store at 2-8°C. Avoid exposure to light. Stable for one year after shipment.
Storage Buffer:
PBS with 0.09% sodium azide, pH7.3

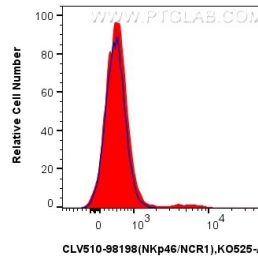
For technical support and original validation data for this product please contact:
T: 1 (888) 4PTGLAB (1-888-478-4522) (toll free in USA), or 1(312) 455-8498 (outside USA)
E: proteintech@ptglab.com
W: ptglab.com

This product is exclusively available under Proteintech Group brand and is not available to purchase from any other manufacturer.

Selected Validation Data



1x10⁶ mouse splenocytes were surface stained with APC Anti-Mouse CD49b, and 0.25 ug CoraLux Violet 510 Anti-Mouse Nkp46/NCR1 Rabbit RecAb (CLV510-98198, Clone: 241804A12) or CoraLux Violet 510 Rabbit IgG Isotype Control Recombinant Antibody (CLV510-98136, Clone: 240953C9). Cells were not fixed.



1x10⁶ mouse splenocytes were surface stained with 0.25 ug CoraLux Violet 510 Anti-Mouse Nkp46/NCR1 Rabbit RecAb (CLV510-98198, Clone: 241804A12) (red) or CoraLux Violet 510 Rabbit IgG Isotype Control Recombinant Antibody (CLV510-98136, Clone: 240953C9) (blue). Cells were not fixed.