

For Research Use Only

FcZero-rAb® CoraLux Violet 510 Anti-Mouse CD3 (17A2) Rabbit Recombinant Antibody

Catalog Number: CLV510-FcA65659



Basic Information

Catalog Number:
CLV510-FcA65659

Size:
100ug, 500 ug/ml

Source:
Rabbit

Isotype:
IgG

GenBank Accession Number:
BC098236

GeneID (NCBI):
12501

UNIPROT ID:
P22646

Full Name:
CD3 antigen, epsilon polypeptide

Purification Method:
Protein A purification

CloneNo.:
17A2

Recommended Dilutions:
FC: 0.25 ug per 10⁶ cells in a 100 µl suspension

Excitation/Emission maxima wavelengths:
410 nm / 501 nm

Applications

Tested Applications:
FC

Species Specificity:
mouse

Positive Controls:

FC : mouse splenocytes,

Background Information

CD3 is a multimeric protein associated with the T-cell receptor (TCR) to form a complex involved in antigen recognition and signal transduction (PMID: 15885124). CD3 is composed of CD3γ, δ, ε, and ζ chains (PMID: 1826255). It is expressed by thymocytes in a developmentally regulated manner, T cells, and some NK cells (PMID: 3289580). The TCR recognizes antigens bound to major histocompatibility complex (MHC) molecules. TCR-mediated peptide-MHC recognition is transmitted to the CD3 complex, leading to the intracellular signal transduction (PMID: 11985657).

Storage

Storage:

Store at 2-8°C. Avoid exposure to light. Stable for one year after shipment.

Storage Buffer:

PBS with 0.09% sodium azide, pH7.3

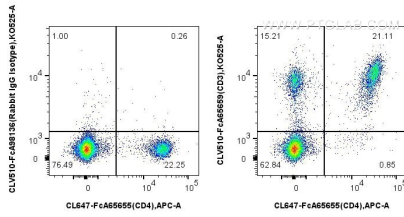
For technical support and original validation data for this product please contact:

T: 1 (888) 4PTGLAB (1-888-478-4522) (toll free in USA), or 1(312) 455-8498 (outside USA)

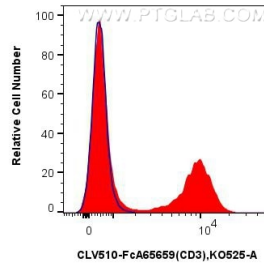
E: proteintech@ptglab.com
W: ptglab.com

This product is exclusively available under Proteintech Group brand and is not available to purchase from any other manufacturer.

Selected Validation Data



1x10⁶ mouse splenocytes were surface stained with FcZero-rAb™ CoraLite® Plus 647 Anti-Mouse CD4 (RM4-4), and 0.25 ug CoraLux Violet 510 Anti-Mouse CD3 (17A2) Rabbit IgG RecAb (CLV510-FcA65659, Clone: 17A2) or CoraLux Violet 510 Rabbit IgG Isotype Control RecAb (CLV510-FcA98136, Clone: 240953C9). Cells were not fixed.



1x10⁶ mouse splenocytes were surface stained with 0.25 ug CoraLux Violet 510 Anti-Mouse CD3 (17A2) Rabbit IgG RecAb (CLV510-FcA65659, Clone: 17A2) (red) or CoraLux Violet 510 Rabbit IgG Isotype Control RecAb (CLV510-FcA98136, Clone: 240953C9) (blue). Cells were not fixed.