

For Research Use Only

FcZero-rAb™ CoraLux Violet 510 Rabbit IgG Isotype Control Recombinant Antibody

Catalog Number: CLV510-FcA98136



Basic Information

Catalog Number:
CLV510-FcA98136

Size:
100ug , 500 µg/ml

Source:
Rabbit

Isotype:
IgG

GenBank Accession Number:
GeneID (NCBI):
Full Name:

Purification Method:
Protein A purification

CloneNo.:
240953C9

Recommended Dilutions:
FC: 0.25 ug per 10⁶ cells in a 100 µl suspension

Excitation/Emission maxima wavelengths:
410 nm / 501 nm

Applications

Tested Applications:
FC

Species Specificity:
n/a

Positive Controls:
FC : human PBMCs,

Background Information

This product is an isotype control antibody, which is used to estimate the non-specific binding of target primary antibodies due to Fc receptor binding or other protein-protein interactions. An isotype control antibody should have the same immunoglobulin type and be used at the same concentration as the test antibody.

Storage

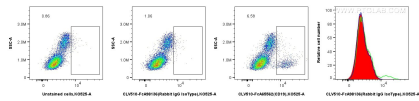
Storage:
Store at 2-8°C. Avoid exposure to light. Stable for one year after shipment.

Storage Buffer:
PBS with 0.09% sodium azide, pH7.3

For technical support and original validation data for this product please contact:
T: 1 (888) 4PTGLAB (1-888-478-4522) (toll free in USA), or 1(312) 455-8498 (outside USA)
E: proteintech@ptglab.com
W: ptglab.com

This product is exclusively available under Proteintech Group brand and is not available to purchase from any other manufacturer.

Selected Validation Data



1x10⁶ human PBMCs were surface stained with 0.25 ug CoraLux Violet 510 Rabbit IgG Isotype Control RecAb (CLV510-FcA98136, Clone:240953C9)(red in histogram), or 0.25 ug CoraLux Violet 510 Anti-Human CD19 (4G7) Rabbit IgG RecAb (CLV510-FcA65562, Clone: 4G7)(green in histogram), or unstained cells(blue in histogram). Cells were not fixed.