

For Research Use Only.
Not For Use In Diagnostics.

Streptavidin-CoraLux Violet 510 Conjugate

Catalog Number: CLV510-PF00030



www.ptglab.com

Information

Catalog Number:
CLV510-PF00030
Host:
Applications:
FC, IF

Reactivity:
Physical State:
Liquid
Conjugation:
CoraLux Violet 510

Recommended Dilutions

1:200-1:1000 for flow cytometry and immunofluorescence

Storage

Storage:
2-8°C for one year.
Storage Buffer:
PBS with 0.1% sodium azide, pH 7.4.
Aliquoting is unnecessary for -20°C storage

Purity

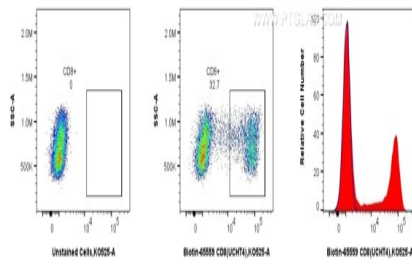
For technical support and original validation data for this product please contact:

T: 1 (888) 4PTGLAB
(1-888-478-4522)
(toll free in USA),
or 1(312) 455-8498
(outside USA)

E : proteintech@ptglab.com
W: ptglab.com

This product is exclusively available under Proteintech Group brand and is not available to purchase from any other manufacturer.

Selected Validation Data



Flow cytometric analysis of human PBMCs using Biotin anti-human CD8 and CoraLite®510-conjugated Streptavidin. Human PBMCs were stained with Biotin CD8 Recombinant Antibody (Cat.No. Biotin-65559, Clone: UCHT4), washed with PBS, and stained with CoraLux Violet 510-conjugated Streptavidin (Cat.No.CLV510-PF00030) and analyzed by flow cytometry.