

For Research Use Only

Cardinal Red™-conjugated Cyclin E2 Polyclonal antibody

Catalog Number: CR-11935



Basic Information

Catalog Number:

CR-11935

Size:

100ul , Concentration: 1000 µg/ml by Nanodrop;

Source:

Rabbit

Isotype:

IgG

Immunogen Catalog Number:

AG2532

GenBank Accession Number:

BC020729

GeneID (NCBI):

9134

UNIPROT ID:

O96020

Full Name:

cyclin E2

Calculated MW:

374 aa, 44 kDa

Observed MW:

44 kDa

Purification Method:

Antigen affinity purification

Recommended Dilutions:

FC (Intra): 0.20 ug per 10⁶ cells in a 100 µl suspension

FC: 0.20 ug per 10⁶ cells in a 100 µl suspension

Excitation/Emission maxima wavelengths:

592 nm / 611 nm

Applications

Tested Applications:

FC (Intra)

Species Specificity:

human

Positive Controls:

FC (Intra) : HeLa cells,

FC : HeLa cells,

Background Information

Cyclin E2 (CCNE2) belongs to the highly conserved cyclin family, whose members are characterized by a dramatic periodicity in protein abundance throughout the cell cycle. Cyclins function as regulators of cyclin-dependent kinases (CDKs). Different cyclins exhibit distinct expression and degradation patterns which contribute to the temporal coordination of cell cycle events. CCNE2 forms a complex with and functions as a regulatory subunit of CDK2 and has been shown to specifically interact with CIP/KIP family of CDK inhibitors. CCNE2 plays a role in cell cycle G1/S transition and its expression peaks at the G1-S phase. Whereas cyclin E1 is expressed in most proliferating normal and tumor cells, cyclin E2 levels are low or undetectable in nontransformed cells, and are elevated in tumor-derived cells.

Storage

Storage:

Store at -20°C. Avoid exposure to light. Stable for one year after shipment.

Storage Buffer:

PBS with 50% glycerol, 0.05% Proclin300, 0.5% BSA, pH7.3

Aliquoting is unnecessary for -20°C storage

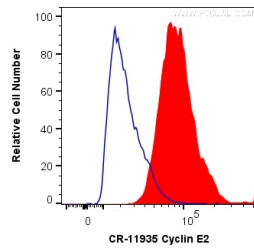
For technical support and original validation data for this product please contact:

T: 1 (888) 4PTGLAB (1-888-478-4522) (toll free in USA), or 1(312) 455-8498 (outside USA)

E: proteintech@ptglab.com
W: ptglab.com

This product is exclusively available under Proteintech Group brand and is not available to purchase from any other manufacturer.

Selected Validation Data



1X10⁶ HeLa cells were intracellularly stained with 0.2 ug Cardinal Red™ Anti-Human Cyclin E2 (CR-11935) (red), or 0.2 ug isotype control (blue). Cells were fixed and permeabilized with Transcription Factor Staining Buffer Kit (PF00011).