

For Research Use Only

# Cardinal Red™-conjugated PTEN Polyclonal antibody



Catalog Number: CR-22034 **Featured Product**

## Basic Information

<b>Catalog Number:</b> CR-22034	<b>GenBank Accession Number:</b> BC005821	<b>Purification Method:</b> Antigen affinity purification
<b>Size:</b> 100ul , Concentration: 1 mg/mL by Nanodrop;	<b>GeneID (NCBI):</b> 5728	<b>Excitation/Emission maxima wavelengths:</b> 592 nm / 611 nm
<b>Source:</b> Rabbit	<b>Full Name:</b> phosphatase and tensin homolog	
<b>Isotype:</b> IgG	<b>Calculated MW:</b> 47 kDa	
<b>Immunogen Catalog Number:</b> AG17274	<b>Observed MW:</b> 55 kDa, 68 kDa	

## Applications

**Tested Applications:**  
FC (Intra)

**Species Specificity:**  
human, mouse

## Background Information

PTEN(Phosphatase and tensin homolog) is also named as MMAC1, TEP1 and it modulates cell cycle progression and cell survival (blockage) through down-regulating the positive cell cycle-regulator (cycle D1) by its phosphatase activity and up-regulating the negative cell cycle regulator p21 (by its lipid phosphatase activity). PTEN is an important tumor suppressor whose inactivation frequency in cancers is ranked second after p53 tumor suppressor inactivation. PTEN is a 403-residue protein structured in an amino (N)-terminal phosphatase domain and a carboxy (C)-terminal C2 domain that binds phospholipid membranes.(PMID:14749127). There are some report showing that SUMOylation appears to be a positive regulator in controlling PTEN membrane association, whereas phosphorylation is a negative regulator that may neutralize SUMOylation through intramolecular electrostatic interactions (PMID:22713753). This antibody can recognize two isoforms with MW of 55kDa and 68 kDa.

## Storage

**Storage:**  
Store at -20°C. Avoid exposure to light. Stable for one year after shipment.

**Storage Buffer:**  
PBS with 50% Glycerol, 0.05% Proclin300, 0.5% BSA, pH 7.3.

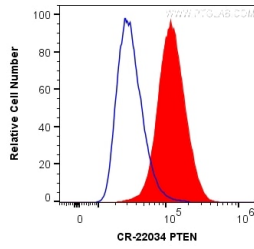
Aliquoting is unnecessary for -20°C storage

\*\*\* 20ul sizes contain 0.1% BSA

For technical support and original validation data for this product please contact:  
T: 1 (888) 4PTGLAB (1-888-478-4522) (toll free in USA), or 1(312) 455-8498 (outside USA) E: proteintech@ptglab.com W: ptglab.com

This product is exclusively available under Proteintech Group brand and is not available to purchase from any other manufacturer.

## Selected Validation Data



1X10<sup>6</sup> HeLa cells were intracellularly stained with 0.2 ug Cardinal Red™ Anti-Human PTEN (CR-22034) (red), or 0.2 ug Control Antibody. Cells were fixed with 4% PFA and permeabilized with Flow Cytometry Perm Buffer (PF00011-C).