

For Research Use Only

# Cardinal Red™-conjugated Cyclin D1 Monoclonal antibody

Catalog Number: CR-60186

Featured Product



## Basic Information

Catalog Number:

CR-60186

Size:

100ul , Concentration: 1000 µg/ml by Nanodrop;

Source:

Mouse

Isotype:

IgG2b

Immunogen Catalog Number:

AG0689

GenBank Accession Number:

BC000076

GeneID (NCBI):

595

UNIPROT ID:

P24385

Full Name:

cyclin D1

Calculated MW:

295 aa, 34 kDa

Observed MW:

34 kDa

Purification Method:

Protein A purification

CloneNo.:

2G3G5

Recommended Dilutions:

WB 1:500-1:2000

Excitation/Emission maxima wavelengths:

592 nm / 611 nm

## Applications

Tested Applications:

WB, FC (Intra)

Species Specificity:

human, mouse, rat

Positive Controls:

WB : U2OS cells, HeLa cells, NIH/3T3 cells

## Background Information

CCND1 (cyclin D1), also known as PRAD1 or BCL1, belongs to the highly conserved cyclin family, whose members are characterized by a dramatic periodicity in protein abundance throughout the cell cycle. CCND1 forms a complex with and functions as a regulatory subunit of CDK4 or CDK6, whose activity is required for cell cycle G1/S transition. The CCND1 gene, located on 11q13 has been reported to be overexpressed in mantle cell lymphoma (MCL) due to the chromosomal translocation. CCND1 has been shown to interact with tumor suppressor protein Rb and the expression of this gene is regulated positively by Rb. Over-expression of CCND1 is known to correlate with the early onset of cancer and risk of tumor progression and metastasis.

## Storage

Storage:

Store at -20°C. Avoid exposure to light. Stable for one year after shipment.

Storage Buffer:

PBS with 50% Glycerol, 0.05% Proclin300, 0.5% BSA, pH 7.3.

Aliquoting is unnecessary for -20°C storage

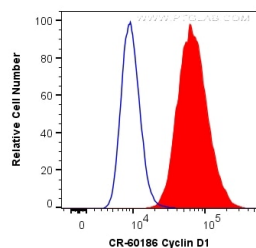
For technical support and original validation data for this product please contact:

T: 1 (888) 4PTGLAB (1-888-478-4522) (toll free in USA), or 1(312) 455-8498 (outside USA)

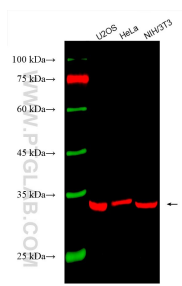
E: [proteintech@ptglab.com](mailto:proteintech@ptglab.com)  
W: [ptglab.com](http://ptglab.com)

This product is exclusively available under Proteintech Group brand and is not available to purchase from any other manufacturer.

## Selected Validation Data



1X10<sup>6</sup> HeLa cells were intracellularly stained with 0.2 ug Cardinal Red™ Anti-Human Cyclin D1 (CR-60186, Clone:2G3G5) (red), or 0.2 ug isotype control (blue). Cells were fixed and permeabilized with Transcription Factor Staining Buffer Kit (PF00011).



Various lysates were subjected to SDS PAGE followed by western blot with CR-60186 (Cyclin D1 antibody) at dilution of 1:1000 incubated at room temperature for 1.5 hours.