

For Research Use Only

# Cardinal Red™ Mouse IgG1 Isotype Control (MOPC-21)



Catalog Number: CR-65124

## Basic Information

<b>Catalog Number:</b> CR-65124	<b>GenBank Accession Number:</b> GeneID (NCBI): 16017	<b>Purification Method:</b> Affinity purification
<b>Size:</b> 100ug, 0.2 mg/ml	<b>Full Name:</b> immunoglobulin heavy constant gamma 1 (G1m marker)	<b>CloneNo.:</b> MOPC-21
<b>Source:</b> Mouse		<b>Excitation/Emission maxima wavelengths:</b> 592 nm / 611 nm
<b>Isotype:</b> IgG1		

## Applications

**Tested Applications:**  
FC

**Species Specificity:**

## Background Information

The MOPC-21 immunoglobulin is useful as an isotype-matched control. The MOPC-21 immunoglobulin has an unknown binding specificity and is used as an isotype control for mouse IgG1 antibodies. This antibody has been quality-tested for flow cytometry as negative control.

## Storage

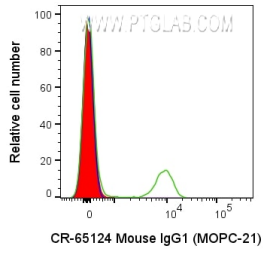
**Storage:**  
Store at 2-8°C. Avoid exposure to light. Stable for one year after shipment.

**Storage Buffer:**  
PBS with 0.09% sodium azide and 0.5% BSA.

For technical support and original validation data for this product please contact:  
T: 1 (888) 4PTGLAB (1-888-478-4522) (toll free in USA), or 1(312) 455-8498 (outside USA)      E: proteintech@ptglab.com  
W: ptglab.com

This product is exclusively available under Proteintech Group brand and is not available to purchase from any other manufacturer.

## Selected Validation Data



1X10<sup>6</sup> human PBMCs were surface stained with 0.2 ug Cardinal Red™ Anti-Mouse IgG1 Isotype Control (CR-65124, Clone:MOPC-21) (red), unstained (blue), or Cardinal Red™ Anti-Human CD3 (UCHT1). Cells were not fixed. Lymphocytes were gated.