

For Research Use Only

# Cardinal Red™ Mouse IgG2b Isotype Control (MPC-11)



Catalog Number: CR-65128

## Basic Information

<b>Catalog Number:</b> CR-65128	<b>GenBank Accession Number:</b> GeneID (NCBI): 16016	<b>Purification Method:</b> Affinity purification
<b>Size:</b> 100ug, 0.2 mg/mL	<b>Full Name:</b> immunoglobulin heavy chain 3 (serum IgG2b)	<b>CloneNo.:</b> MPC-11
<b>Source:</b> Mouse		<b>Excitation/Emission maxima wavelengths:</b> 592 nm / 611 nm
<b>Isotype:</b> IgG2b		

## Applications

**Tested Applications:**  
FC  
**Species Specificity:**

## Background Information

The MPC-11 immunoglobulin is useful as an isotype-matched control. The MPC-11 immunoglobulin has an unknown binding specificity and is used as an isotype control for mouse IgG2b antibodies. This antibody has been quality-tested for flow cytometry as negative control.

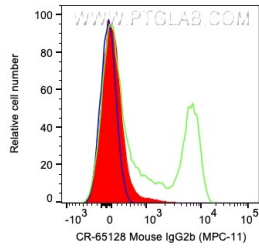
## Storage

**Storage:**  
Store at 2-8°C. Avoid exposure to light. Stable for one year after shipment.  
**Storage Buffer:**  
PBS with 0.09% sodium azide and 0.5% BSA.

For technical support and original validation data for this product please contact:  
T: 1 (888) 4PTGLAB (1-888-478-4522) (toll free in USA), or 1(312) 455-8498 (outside USA) E: proteintech@ptglab.com W: ptglab.com

This product is exclusively available under Proteintech Group brand and is not available to purchase from any other manufacturer.

## Selected Validation Data



$1 \times 10^6$  human PBMCs were surface stained with 0.2  $\mu$ g Cardinal Red™ Anti-Mouse IgG2b Isotype Control (CR-65128, Clone:MPC-11) (red), 5  $\mu$ l CR Anti-Human CD4 (green), or unstained (blue). Cells were not fixed. Lymphocytes were gated.