

For Research Use Only

# Cardinal Red™ Anti-Human CD4 (RPA-T4)



Catalog Number: **CR-65143**

## Basic Information

|                                      |  |   |
|--------------------------------------|--|---|
| <b>Catalog Number:</b><br>CR-65143   | <b>GenBank Accession Number:</b><br>BC025782 | <b>Purification Method:</b><br>Affinity purification                  |
| <b>Size:</b><br>100tests , 5 ul/test | <b>GeneID (NCBI):</b><br>920                 | <b>CloneNo.:</b><br>RPA-T4  |
| <b>Source:</b><br>Mouse              | <b>Full Name:</b><br>CD4 molecule            | <b>Excitation/Emission maxima<br/>wavelengths:</b><br>592 nm / 611 nm |
| <b>Isotype:</b><br>IgG1, kappa       | <b>Calculated MW:</b><br>55 kDa              |   |

## Applications

**Tested Applications:**  
FC

**Species Specificity:**  
Human

## Background Information

CD4 is a 55-kDa transmembrane glycoprotein expressed on T helper cells, majority of thymocytes, monocytes, macrophages, and dendritic cells (PMID: 9304802; 12213222). CD4 is an accessory protein for MHC class-II antigen/T-cell receptor interaction. It plays an important role in T helper cell development and activation (PMID: 9539765; 3112582). CD4 serves as a receptor for the human immunodeficiency virus (HIV) (PMID: 9304802).

## Storage

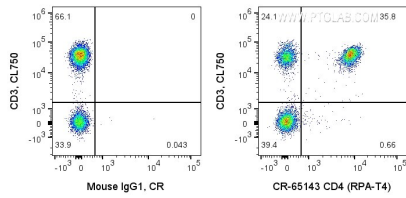
**Storage:**  
Store at 2-8°C. Avoid exposure to light. Stable for one year after shipment.

**Storage Buffer:**  
PBS with 0.09% sodium azide and 0.5% BSA.

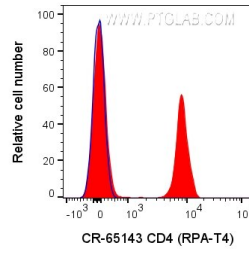
For technical support and original validation data for this product please contact:  
T: 1 (888) 4PTGLAB (1-888-478-4522) (toll free in USA), or 1(312) 455-8498 (outside USA)  
E: [proteintech@ptglab.com](mailto:proteintech@ptglab.com)  
W: [ptglab.com](http://ptglab.com)

**This product is exclusively available under Proteintech Group brand and is not available to purchase from any other manufacturer.**

## Selected Validation Data



1X10<sup>6</sup> human PBMCs were surface co-stained with CoraLite® Plus 750 Anti-Human CD3 and 5 ul Cardinal Red™ Anti-Human CD4 (CR-65143, Clone:RPA-T4) or Mouse IgG1 Isotype Control. Cells were not fixed. Lymphocytes were gated.



1X10<sup>6</sup> human PBMCs were surface stained with 5 ul Cardinal Red™ Anti-Human CD4 (CR-65143, Clone:RPA-T4) (red) or Mouse IgG1 Isotype Control. Cells were not fixed. Lymphocytes were gated.