

For Research Use Only

# Cardinal Red™ Anti-Human MICA/MICB (6D4)



Catalog Number: **CR-65161**

## Basic Information

<b>Catalog Number:</b> CR-65161	<b>GenBank Accession Number:</b> BC016929	<b>Purification Method:</b> Purified by protein-A affinity chromatography
<b>Size:</b> 100tests , 5 ul/test	<b>GeneID (NCBI):</b> 100507436	<b>CloneNo.:</b> 6D4
<b>Source:</b> Mouse	<b>Full Name:</b> MHC class I polypeptide-related sequence A	<b>Excitation/Emission maxima wavelengths:</b> 592 nm / 611 nm
<b>IsoType:</b> IgG2a, kappa	<b>Calculated MW:</b> 383 aa, 43 kDa	

## Applications

**Tested Applications:**  
FC

**Species Specificity:**  
Human

## Background Information

Human MHC class I chain-related genes located within the HLA class I region of chromosome 6 encode MHC class I chain-related A and B (MICA and MICB) (PMID: 11429322). MICA and MICB are stress-inducible surface molecules that are not associated with  $\beta$ 2-microglobulin and do not present peptides (PMID: 9497295). They are expressed in intestinal epithelium and many epithelial tumors (PMID: 10359807). MICA and MICB are ligands for NKG2D which is an activating receptor that is expressed on most natural killer (NK) cells, CD8  $\alpha\beta$  T cells, and  $\gamma\delta$  T cells (PMID: 10426993; 11491531). The monoclonal antibody 6D4 recognizes MICA and MICB.

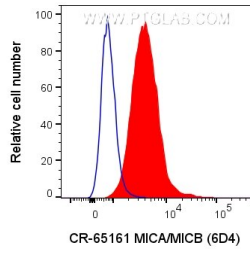
## Storage

**Storage:**  
Store at 2-8°C. Avoid exposure to light. Stable for one year after shipment.  
**Storage Buffer:**  
PBS with 0.09% sodium azide and 0.5% BSA.

For technical support and original validation data for this product please contact:  
T: 1 (888) 4PTGLAB (1-888-478-4522) (toll free in USA), or 1(312) 455-8498 (outside USA)      E: [proteintech@ptglab.com](mailto:proteintech@ptglab.com)  
W: [ptglab.com](http://ptglab.com)

**This product is exclusively available under Proteintech Group brand and is not available to purchase from any other manufacturer.**

## Selected Validation Data



1X10<sup>6</sup> HeLa cells were surface stained with 5 ul Cardinal Red™ Anti-Human MICA/MICB (CR-65161, Clone:6D4) (red), or Mouse IgG2a Isotype Control (blue). Cells were not fixed.