

For Research Use Only

Cardinal Red™ Anti-Human CD163 (GHI/61)



Catalog Number: CR-65169

Basic Information

Catalog Number: CR-65169	GenBank Accession Number: BC051281	Purification Method: Purified by protein-A affinity chromatography
Size: 100tests , 5 ul/test	GeneID (NCBI): 9332	CloneNo.: GHI/61
Source: Mouse	Full Name: CD163 molecule	Excitation/Emission maxima wavelengths: 592 nm / 611 nm
Isotype: IgG1, kappa	Calculated MW: 1156 aa, 125 kDa	

Applications

Tested Applications:
FC

Species Specificity:
Human

Background Information

CD163, also known as M130, is a membrane glycoprotein which belongs to the scavenger receptor superfamily (PMID: 8370408). It is an acute phase-regulated and signal-inducing macrophage protein expressed exclusively in monocytes and tissue macrophages (PMID: 11196644). CD163 mediates endocytosis of haptoglobin-haemoglobin complexes (PMID: 11196644). The uptake of haptoglobin by macrophages contributes to the recycling of iron and also to the inflammatory response (PMID: 22900885). Soluble CD163 (sCD163), as a result of ectodomain shedding during inflammatory activation of macrophages, circulates in blood and has been suggested as a plasma/serum marker for macrophage activity (PMID: 12570164).

Storage

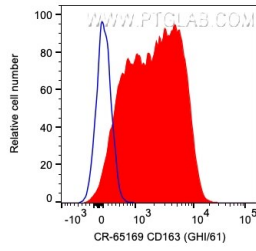
Storage:
Store at 2-8°C. Avoid exposure to light. Stable for one year after shipment.

Storage Buffer:
PBS with 0.09% sodium azide and 0.5% BSA.

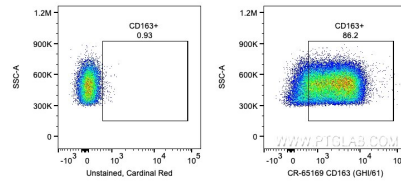
For technical support and original validation data for this product please contact:
T: 1 (888) 4PTGLAB (1-888-478-4522) (toll free in USA), or 1(312) 455-8498 (outside USA) E: proteintech@ptglab.com
W: ptglab.com

This product is exclusively available under Proteintech Group brand and is not available to purchase from any other manufacturer.

Selected Validation Data



1X10⁶ human PBMCs were surface stained with 5 ul Cardinal Red™ Anti-Human CD163 (CR-65169, Clone:GHI/61) (red) or unstained. Cells were not fixed. Monocytes and granulocytes were gated.



1X10⁶ human PBMCs were surface stained with 5 ul Cardinal Red™ Anti-Human CD163 (CR-65169, Clone:GHI/61) or unstained. Cells were not fixed. Monocytes and granulocytes were gated.