

For Research Use Only

# Cardinal Red™ Anti-Human CD13 (WM15)



Catalog Number: CR-65186

## Basic Information

<b>Catalog Number:</b> CR-65186	<b>GenBank Accession Number:</b> BC058928	<b>Purification Method:</b> Purified by protein-A affinity chromatography
<b>Size:</b> 100tests, 5 µl/test	<b>GeneID (NCBI):</b> 290	<b>CloneNo.:</b> WM15
<b>Source:</b> Mouse	<b>Full Name:</b> alanyl (membrane) aminopeptidase	<b>Excitation/Emission maxima wavelengths:</b> 592 nm / 611 nm
<b>Isotype:</b> IgG1, kappa	<b>Calculated MW:</b> 110 kDa	

## Applications

**Tested Applications:**  
FC

**Species Specificity:**  
Human, Non-human primates

## Background Information

CD13, also named as APN, ANPEP (aminopeptidase N) or PEPN, belongs to the peptidase M1 family. CD13 is a heavily glycosylated, ~150-240 kDa, type-II membrane, expressed by most cells of myeloid origin including monocytes, macrophages, granulocytes, and their hematopoietic precursors. It is also abundantly expressed in the brush border of epithelial cells from renal proximal tubules and small intestine, in prostatic epithelial cells, in bile duct canaliculi, in mast cells, and, in some cases, in fibroblasts and smooth muscle cells. CD13 is a multifunctional protein and plays varying roles in cell migration, cell proliferation, cell differentiation, and so on. CD13 participates in angiogenesis generating and modulating angiogenic signals and can be a marker of angiogenic vessels. CD13 is also a pan-myeloid marker, present on mature granulocytes and monocytes. (PMID: 8805662, 10098327, 18603472, 18097955, 17897790, 17888402, 21339174)

## Storage

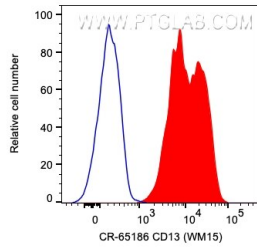
**Storage:**  
Store at 2-8°C. Avoid exposure to light. Stable for one year after shipment.

**Storage Buffer:**  
PBS with 0.09% sodium azide and 0.5% BSA.

For technical support and original validation data for this product please contact:  
T: 1 (888) 4PTGLAB (1-888-478-4522) (toll free in USA), or 1(312) 455-8498 (outside USA) E: proteintech@ptglab.com W: ptglab.com

This product is exclusively available under Proteintech Group brand and is not available to purchase from any other manufacturer.

## Selected Validation Data



1X10<sup>6</sup> human PBMCs were surface stained with 5 ul Cardinal Red™ Anti-Human CD13 (CR-65186, Clone:WM15) (red) or unstained. Cells were not fixed. Granulocytes were gated.