

For Research Use Only

Cardinal Red™ Anti-Human CD35 (E11)



Catalog Number: **CR-65254**

Basic Information

Catalog Number: CR-65254	GenBank Accession Number: NM_000573	Purification Method: N/A
Size: 100tests , 5 µl/test	GeneID (NCBI): 1378	CloneNo.: E11
Source: Mouse	Full Name: complement component (3b/4b) receptor 1 (Knops blood group)	Excitation/Emission maxima wavelengths: 592 nm / 611 nm
Isotype: IgG1, kappa	Calculated MW: 224 kDa	

Applications

Tested Applications:
FC

Species Specificity:
Human

Background Information

CD35, also known as complement receptor type 1 (CR1) or C3b/C4b receptor, is a single-chain glycoprotein consisting of 30 repeating homologous protein domains known as short consensus repeats (~60 amino acids each) followed by transmembrane and cytoplasmic domains (PMID: 8765013). CD35 is variably expressed by granulocytes, monocytes, B cells, some T cells, erythrocytes, follicular dendritic cells, Langerhans cells, and glomerular podocytes (PMID: 19004497). CD35 acts as a receptor for C3b and C4b and plays important roles in the regulation of the complement cascade and clearance of immune complexes.

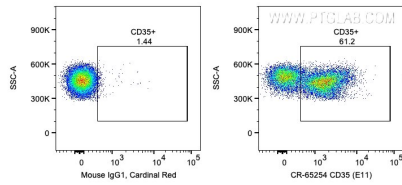
Storage

Storage:
Store at 2-8°C. Avoid exposure to light. Stable for one year after shipment.
Storage Buffer:
PBS with 0.09% sodium azide and 0.5% BSA.

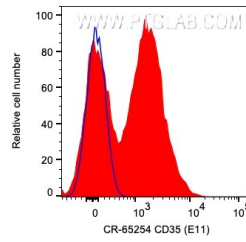
For technical support and original validation data for this product please contact:
T: 1 (888) 4PTGLAB (1-888-478-4522) (toll free in USA), or 1(312) 455-8498 (outside USA) E: proteintech@ptglab.com
W: ptglab.com

This product is exclusively available under Proteintech Group brand and is not available to purchase from any other manufacturer.

Selected Validation Data



1X10⁶ human PBMCs were surface stained with 5 ul Cardinal Red™ Anti-Human CD35 (CR-65254, Clone:E11) or Mouse IgG1 Isotype Control. Cells were not fixed. Lymphocytes were gated.



1X10⁶ human PBMCs were surface stained with 5 ul Cardinal Red™ Anti-Human CD35 (CR-65254, Clone:E11) (red) or Mouse IgG1 Isotype Control (blue). Cells were not fixed. Lymphocytes were gated.