

For Research Use Only

Cardinal Red™ Anti-Human CD55 (JS11)



Catalog Number: **CR-65271**

Basic Information

Catalog Number: CR-65271	GenBank Accession Number: BC001288	Purification Method: Affinity purification
Size: 100tests , 5 ul/test	GeneID (NCBI): 1604	CloneNo.: JS11
Source: Mouse	Full Name: CD55 molecule, decay accelerating factor for complement (Cromer blood group)	Excitation/Emission maximum wavelengths: 592 nm / 611 nm
Isotype: IgG1	Calculated MW: 41 kDa	

Applications

Tested Applications:
FC

Species Specificity:
Human

Background Information

CD55, also known as DAF, is a glycosylphosphatidylinositol (GPI)-anchored surface glycoprotein that is widely distributed on blood, stroma, epithelial, and endothelial cells (PMID: 7517044; 29503741). It can also exist as a soluble form in plasma, urine, saliva, tears, and synovial fluids (PMID: 29503741). CD55 is a complement regulatory protein (PMID: 2469439; 7517044). It inhibits formation of the C3 convertases through binding to C3b and C4b. It also binds the alternate pathway convertase C3bBb, the classical pathway convertase and C4b2a to accelerate their decay (PMID: 17289551). CD55 also serves as a receptor for coxsackieviruses B1, B3, and B5 and several enteroviruses (PMID: 7538177; 7517044).

Storage

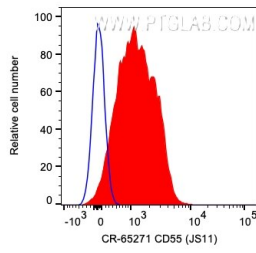
Storage:
Store at 2-8°C. Avoid exposure to light. Stable for one year after shipment.

Storage Buffer:
PBS with 0.09% sodium azide and 0.5% BSA.

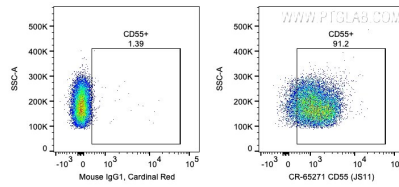
For technical support and original validation data for this product please contact:
T: 1 (888) 4PTGLAB (1-888-478-4522) (toll free in USA), or 1(312) 455-8498 (outside USA) E: proteintech@ptglab.com
W: ptglab.com

This product is exclusively available under Proteintech Group brand and is not available to purchase from any other manufacturer.

Selected Validation Data



1X10⁶ human PBMCs were surface stained with 5 ul Cardinal Red™ Anti-Human CD55 (CR-65271, Clone: JS11) (red) or Mouse IgG1 Isotype Control. Cells were not fixed. Lymphocytes were gated.



1X10⁶ human PBMCs were surface stained with 5 ul Cardinal Red™ Anti-Human CD55 (CR-65271, Clone: JS11) or Mouse IgG1 Isotype Control. Cells were not fixed. Lymphocytes were gated.