

For Research Use Only

Cardinal Red™ Mouse IgG1 Isotype Control (1F8D3)



Catalog Number: CR-66360-1

Basic Information

Catalog Number: CR-66360-1	GenBank Accession Number: GeneID (NCBI):	Purification Method: Protein G purification
Size: 100ug, Concentration: 200 µg/ml by Nanodrop;	Full Name:	CloneNo.: 1F8D3
Source: Mouse		Excitation/Emission maxima wavelengths: 592 nm / 611 nm
Isotype: IgG1		

Applications

Tested Applications:
FC

Species Specificity:
Megathura crenulata

Background Information

This antibody is used as the isotype control of mouse IgG1 (Kappa). It can be used as the isotype control in Flow Cytometry, Immuno-Precipitation and other experiments. The immunogen of this antibody is Keyhole Limpet Hemocyanin (KLH).

Storage

Storage:
Store at 2-8°C. Avoid exposure to light. Stable for one year after shipment.

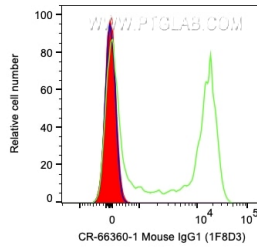
Storage Buffer:
PBS with 0.09% sodium azide and 0.5% BSA.

*** 20ul sizes contain 0.1% BSA

For technical support and original validation data for this product please contact:
T: 1 (888) 4PTGLAB (1-888-478-4522) (toll free in USA), or 1(312) 455-8498 (outside USA) E: proteintech@ptglab.com W: ptglab.com

This product is exclusively available under Proteintech Group brand and is not available to purchase from any other manufacturer.

Selected Validation Data



1X10⁶ human PBMCs were surface stained with 0.5 ug Cardinal Red™ Anti-Mouse IgG1 isotype control (CR-66360-1, Clone:1F8D3) (red), Cardinal Red™ Anti-Human CD45RA (green), or unstained (blue). Cells were not fixed. Lymphocytes were gated.