

For Research Use Only

Cardinal Red™ Mouse IgG2a isotype control (11A1B2)



Catalog Number: CR-66360-2

Basic Information

Catalog Number: CR-66360-2	GenBank Accession Number: GeneID (NCBI):	Purification Method: Protein A purification
Size: 100ug, Concentration: 0.2 mg/mL by Nanodrop;	Full Name:	CloneNo.: 11A1B2
Source: Mouse		Excitation/Emission maxima wavelengths: 592 nm / 611 nm
Isotype: IgG2a		

Applications

Tested Applications:
FC

Species Specificity:
Megathura crenulata

Background Information

This antibody is used as the isotype control of mouse IgG2a. It can be used as the isotype control in Flow Cytometry, Immuno-Precipitation and other experiments. The immunogen of this antibody is Keyhole Limpet Hemocyanin (KLH).

Storage

Storage:
Store at 2-8°C. Avoid exposure to light. Stable for one year after shipment.

Storage Buffer:
PBS with 0.09% sodium azide and 0.5% BSA.

*** 20ul sizes contain 0.1% BSA

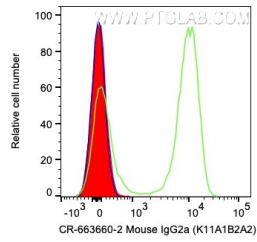
For technical support and original validation data for this product please contact:

T: 1 (888) 4PTGLAB (1-888-478-4522) (toll free in USA), or 1(312) 455-8498 (outside USA)

E: proteintech@ptglab.com
W: ptglab.com

This product is exclusively available under Proteintech Group brand and is not available to purchase from any other manufacturer.

Selected Validation Data



1×10^6 human PBMCs were surface stained with 0.2 μ g Cardinal Red™ Anti-Mouse IgG2a isotype control (CR-66360-2, Clone:11A1B2) (red), Cardinal Red™ Anti-Human CD3 (green), or unstained (blue). Cells were not fixed. Lymphocytes were gated.