

For Research Use Only

Recombinant Human SELPLG/CD162 protein (rFc Tag)



Catalog Number: Eg1692

Basic Information

Species:
Human

Purity:
>90 %, SDS-PAGE

Tag:
rFc Tag

Technical Specifications

Purity:

>90 %, SDS-PAGE

Endotoxin Level:

<0.1 EU/μg protein, LAL method

Source:

HEK293-derived Human SELPLG protein Gln42-Cys320 (Accession# Q14242-1) with a rabbit IgG Fc tag at the C-terminus.

GeneID:

6404

Accession:

Q14242-1

Predicted Molecular Mass:

55.1 kDa

SDS-PAGE:

80-90 kDa, reducing (R) conditions

Formulation:

Lyophilized from 0.22 μm filtered solution in PBS, pH 7.4. Normally 5% trehalose and 5% mannitol are added as protectants before lyophilization.

Biological Activity

Not tested

Storage and Shipping

Storage:

It is recommended that the protein be aliquoted for optimal storage. Avoid repeated freeze-thaw cycles.

- Until expiry date, -20°C to -80°C as lyophilized proteins.
- 3 months, -20°C to -80°C under sterile conditions after reconstitution.

Shipping:

The product is shipped at ambient temperature. Upon receipt, store it immediately at the recommended temperature.

Reconstitution

Briefly centrifuge the tube before opening. Reconstitute at 0.1-0.5 mg/mL in sterile water.

Background

SELPLG (selectin P ligand), also known as CD162 or PSGL-1, is a type I transmembrane mucin-like glycoprotein. It is an adhesion molecule expressed on the surface of neutrophils, monocytes, and most lymphocytes as a homodimer of approximately 230-250 kDa (PMID: 7545173; 1378449; 9353350). SELPLG plays a critical role in the early stages of inflammation due to its ability to bind E-selectin (CD62E), L-selectin (CD62L), and P-selectin (CD62P) (PMID: 35597982).

References

1. Vachino G. et al. (1995). J Biol Chem. 270(37):21966-21974.
2. Moore KL. et al. (1992). J Cell Biol. 118(2):445-456.
3. Borges E. et al. (1997). J Biol Chem. 272(45):28786-28792.
4. Burnie J. et al. (2022). Retrovirology. 19(1):9.

Synonyms

SELPLG, CD162, CLA, P-selectin glycoprotein ligand 1, PSGL 1

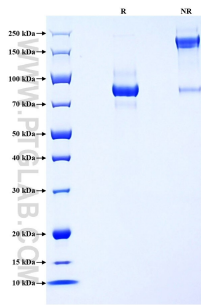
For technical support and original validation data for this product please contact

T: 1 (888) 4PTGLAB (1-888-478-4522) (toll free in USA), or 1(312) 455-8498 (outside USA)

E: proteintech@ptglab.com
W: ptglab.com

This product is exclusively available under Proteintech Group brand and is not available to purchase from any other manufacturer.

Selected Validation Data



Purity of Recombinant Human SELPLG was determined by SDS-PAGE. The protein was resolved in an SDS-PAGE in reducing (R) and non-reducing (NR) conditions and stained using Coomassie blue.