

For Research Use Only

# Recombinant Human LILRA2 protein (rFc Tag)



Catalog Number: Eg1746

## Basic Information

**Species:**  
Human

**Purity:**  
>90 %, SDS-PAGE

**Tag:**  
rFc Tag

## Technical Specifications

**Purity:**

>90 %, SDS-PAGE

**Endotoxin Level:**

<0.1 EU/μg protein, LAL method

**Source:**

HEK293-derived Human LILRA2 protein Gly24-Asn449 (Accession# Q8N149-1) with a rabbit IgG Fc tag at the C-terminus.

**GeneID:**

11027

**Accession:**

Q8N149-1

**Predicted Molecular Mass:**

73.2 kDa

**SDS-PAGE:**

80-110 kDa, reducing (R) conditions

**Formulation:**

Lyophilized from 0.22 μm filtered solution in PBS, pH 7.4. Normally 5% trehalose and 5% mannitol are added as protectants before lyophilization.

## Biological Activity

Not tested

## Storage and Shipping

**Storage:**

It is recommended that the protein be aliquoted for optimal storage. Avoid repeated freeze-thaw cycles.

- Until expiry date, -20°C to -80°C as lyophilized proteins.
- 3 months, -20°C to -80°C under sterile conditions after reconstitution.

**Shipping:**

The product is shipped at ambient temperature. Upon receipt, store it immediately at the recommended temperature.

## Reconstitution

Briefly centrifuge the tube before opening. Reconstitute at 0.1-0.5 mg/mL in sterile water.

## Background

LILRA2, also known as CD85H and ILT1, is a member of the subfamily A class of LIR receptors (LILRAs). LILRA2 is an activating receptor highly expressed in inflammatory tissues, and is involved in granulocyte and macrophage activation. Cross-linking of LILRA2 on the surface of leukocytes recruits protein tyrosine kinase signaling molecules that lead to cellular activation. It can inhibit dendritic cell differentiation and antigen presentation and suppresses innate immune responses. It plays a role in the innate immune responses against microbial infection and modulates LPS-mediated cytokine production and inhibits phagocytosis by monocytes.

## References

1. Mamegano K, et al. (2008). Genes Immun. 9(3):214-223.
2. Nakajima H, et al. (1999). J Immunol. 162(1):5-8.
3. Lu HK, et al. (2012). PLoS One. 7(8).

## Synonyms

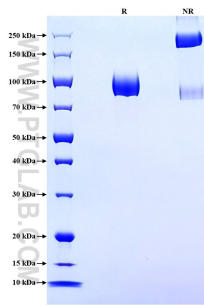
CD85 antigen-like family member H, CD85h, ILT 1, ILT1, ILT-1

For technical support and original validation data for this product please contact

T: 1 (888) 4PTGLAB (1-888-478-4522) (toll free in USA), or 1(312) 455-8498 (outside USA) E: proteintech@ptglab.com  
W: ptglab.com

This product is exclusively available under Proteintech Group brand and is not available to purchase from any other manufacturer.

## Selected Validation Data



Purity of Recombinant Human LILRA2 was determined by SDS-PAGE. The protein was resolved in an SDS-PAGE in reducing (R) and non-reducing (NR) conditions and stained using Coomassie blue.