

For Research Use Only

Recombinant Human CD300C protein (rFc Tag)



Catalog Number: Eg1905

Basic Information

Species:
Human

Purity:
>90 %, SDS-PAGE

Tag:
rFc Tag

Technical Specifications

Purity:
>90 %, SDS-PAGE

Endotoxin Level:
<0.1 EU/μg protein, LAL method

Source:
HEK293-derived Human CD300C protein Gly21-Arg183 (Accession# Q08708) with a rabbit IgG Fc tag at the C-terminus.

GeneID:
10871

Accession:
Q08708

Predicted Molecular Mass:
44.1 kDa

SDS-PAGE:
50-70 kDa, reducing (R) conditions

Formulation:
Lyophilized from 0.22 μm filtered solution in PBS, pH 7.4. Normally 5% trehalose and 5% mannitol are added as protectants before lyophilization.

Biological Activity

Not tested

Storage and Shipping

Storage:

It is recommended that the protein be aliquoted for optimal storage. Avoid repeated freeze-thaw cycles.

- Until expiry date, -20°C to -80°C as lyophilized proteins.
- 3 months, -20°C to -80°C under sterile conditions after reconstitution.

Shipping:

The product is shipped at ambient temperature. Upon receipt, store it immediately at the recommended temperature.

Reconstitution

Briefly centrifuge the tube before opening. Reconstitute at 0.1-0.5 mg/mL in sterile water.

Background

CD300c is a member of the CD300 family of receptors, which are type I transmembrane proteins expressed in both myeloid and lymphoid lineages and modulate immune responses by their stimulatory and inhibitory capabilities. CD300c, also known as CLM-6, CMRF-35 and IgSF16, is composed of an IgV-like extracellular domain, a transmembrane domain and a short cytoplasmic tail. It is expressed on the surface of monocytes, macrophages, dendritic cells, neutrophils, some T and B lymphocytes. CD300c has been reported as an activating receptor expressed on monocytes and that it has a potential role in inflammatory responses. It has also been identified as a T cell co-inhibitory molecule.

References

1. Vitallé J. et al. (2019). Eur J Immunol. 49(3):364-374.
2. Jackson DG. et al. (1992). Eur J Immunol. 22(5):1157-1163.
3. Cui C. et al. (2018). Front Immunol. 9:2657.
4. Simhadri VR. et al. (2013). J Innate Immun. 5(4):389-400.

Synonyms

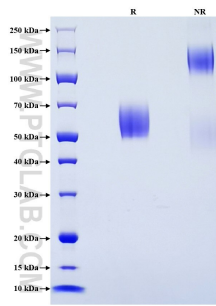
CD300 antigen-like family member C, CD300c molecule, CLM 6, CMRF 35, CMRF 35A

For technical support and original validation data for this product please contact

T: 1 (888) 4PTGLAB (1-888-478-4522) (toll free in USA), or 1(312) 455-8498 (outside USA) E: proteintech@ptglab.com
W: ptglab.com

This product is exclusively available under Proteintech Group brand and is not available to purchase from any other manufacturer.

Selected Validation Data



Purity of Recombinant Human CD300C was determined by SDS-PAGE. The protein was resolved in an SDS-PAGE in reducing (R) and non-reducing (NR) conditions and stained using Coomassie blue.