

For Research Use Only

# Recombinant Mouse CCL22 protein (rFc Tag) (HPLC verified)



Catalog Number: Eg2241

## Basic Information

**Species:**  
Mouse

**Purity:**  
>90 %, SDS-PAGE<br>>90 %, SEC-HPLC

**Tag:**  
rFc Tag

## Technical Specifications

**Purity:**  
>90 %, SDS-PAGE<br>>90 %, SEC-HPLC

**Endotoxin Level:**  
<0.1 EU/μg protein, LAL method

**Source:**  
HEK293-derived Mouse CCL22 protein Gly25-Ser92 (Accession# O88430) with a rabbit IgG Fc tag at the N-terminus.

**GeneID:**  
20299

**Accession:**  
O88430

**Predicted Molecular Mass:**  
35.0 kDa

**SDS-PAGE:**  
35-43 kDa, reducing (R) conditions

**Formulation:**  
Lyophilized from 0.22 μm filtered solution in PBS, pH 7.4. Normally 5% trehalose and 5% mannitol are added as protectants before lyophilization.

## Biological Activity

Not tested

## Storage and Shipping

### Storage:

It is recommended that the protein be aliquoted for optimal storage. Avoid repeated freeze-thaw cycles.

- Until expiry date, -20°C to -80°C as lyophilized proteins.
- 3 months, -20°C to -80°C under sterile conditions after reconstitution.

### Shipping:

The product is shipped at ambient temperature. Upon receipt, store it immediately at the recommended temperature.

## Reconstitution

Briefly centrifuge the tube before opening. Reconstitute at 0.1-0.5 mg/mL in sterile water.

## Background

The C-C motif chemokine ligand 22 (CCL22), also known as MDC, belongs to the group of chemokines, that are both constitutively expressed under homeostatic conditions and inducible upon inflammation. CCL22 is a secreted protein that exerts chemotactic activity for monocytes, dendritic cells, natural killer cells, and for chronically activated T lymphocytes. CCL22 is induced by LPS, IL-4, and IL-13 and in T cells by TCR stimulation.

## References

1. A Mantovani. et al. (2000) J Leukoc Biol. 68(3):400-4.
2. M Vulcan. et al. (2001) Eur J Immunol. 31(3):812-22.
3. Stefanie Scheu, et al. (2017) Int J Mol Sci. 18(11):2306
4. Röhrle N. et al. (2020) Adv Exp Med Biol. 1231:79-96.

## Synonyms

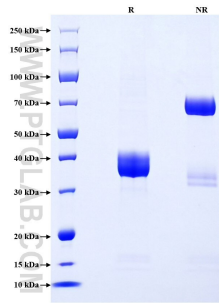
For technical support and original validation data for this product please contact

T: 1 (888) 4PTGLAB (1-888-478-4522) (toll free in USA), or 1(312) 455-8498 (outside USA)

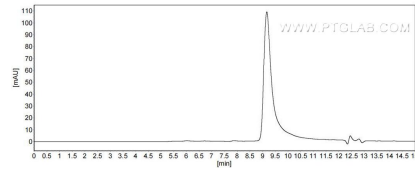
E: proteintech@ptglab.com  
W: ptglab.com

This product is exclusively available under Proteintech Group brand and is not available to purchase from any other manufacturer.

## Selected Validation Data



Purity of Recombinant Mouse CCL22 was determined by SDS-PAGE. The protein was resolved in an SDS-PAGE in reducing (R) and non-reducing (NR) conditions and stained using Coomassie blue.



The purity of Mouse CCL22 was greater than 90% as determined by SEC-HPLC.