

For Research Use Only

# Recombinant Human C-Reactive Protein/CRP protein (rFc Tag)



Catalog Number: Eg2448

## Basic Information

**Species:**  
Human

**Purity:**  
>90 %, SDS-PAGE

**Tag:**  
rFc Tag

## Technical Specifications

**Purity:**

>90 %, SDS-PAGE

**Endotoxin Level:**

<0.1 EU/μg protein, LAL method

**Source:**

HEK293-derived Human C-Reactive Protein protein Gln19-Pro224 (Accession# P02741-1) with a rabbit IgG Fc tag at the C-terminus.

**GeneID:**

1401

**Accession:**

P02741-1

**Predicted Molecular Mass:**

49.3 kDa

**SDS-PAGE:**

47-53 kDa, reducing (R) conditions

**Formulation:**

Lyophilized from 0.22 μm filtered solution in PBS, pH 7.4. Normally 5% trehalose and 5% mannitol are added as protectants before lyophilization.

## Biological Activity

Not tested

## Storage and Shipping

**Storage:**

It is recommended that the protein be aliquoted for optimal storage. Avoid repeated freeze-thaw cycles.

- Until expiry date, -20°C to -80°C as lyophilized proteins.
- 3 months, -20°C to -80°C under sterile conditions after reconstitution.

**Shipping:**

The product is shipped at ambient temperature. Upon receipt, store it immediately at the recommended temperature.

## Reconstitution

Briefly centrifuge the tube before opening. Reconstitute at 0.1-0.5 mg/mL in sterile water.

## Background

C-reactive protein (CRP) is an acute-phase serum protein synthesized by the liver in response to interleukin-6 (IL-6) during inflammation. The name of CRP derives from its ability to react with the C polysaccharide of *Streptococcus pneumoniae*. CRP is an annular, pentameric protein that belongs to the pentraxin family of proteins. CRP displays several functions associated with host defense: it promotes agglutination, bacterial capsular swelling, phagocytosis and complement fixation through its calcium-dependent binding to phosphorylcholine. It is used mainly as a marker of inflammation.

## References

1. Rizo-Téllez, Salma A et al. *Frontiers in immunology* vol. 14 1237729. 26 Jul. 2023.
2. Black, Steven et al. *The Journal of biological chemistry* vol. 279,47 (2004): 48487-90.
3. Zhou, Hai-Hong et al. *Frontiers in immunology* vol. 15 1425168. 14 Jun. 2024.

## Synonyms

C-Reactive Protein/CRP, CRP, C reactive protein, C-reactive protein(1-205), PTX1

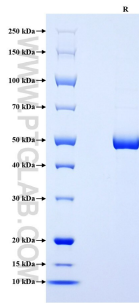
For technical support and original validation data for this product please contact

T: 1 (888) 4PTGLAB (1-888-478-4522) (toll free in USA), or 1(312) 455-8498 (outside USA)

E: [proteintech@ptglab.com](mailto:proteintech@ptglab.com)  
W: [ptglab.com](http://ptglab.com)

This product is exclusively available under Proteintech Group brand and is not available to purchase from any other manufacturer.

## Selected Validation Data



Purity of Recombinant Human C-Reactive Protein was determined by SDS-PAGE. The protein was resolved in an SDS-PAGE in reducing (R) conditions and stained using Coomassie blue.