

For Research Use Only

Recombinant Human BCAM protein (rFc Tag) (HPLC verified)



Catalog Number: Eg2567

Basic Information

Species:
Human

Purity:
>90 %, SDS-PAGE
>90 %, SEC-HPLC

Tag:
rFc Tag

Technical Specifications

Purity:
>90 %, SDS-PAGE
>90 %, SEC-HPLC

Endotoxin Level:
<0.1 EU/μg protein, LAL method

Source:
HEK293-derived Human BCAM protein Glu32-Ala547 (Accession# P50895) with a rabbit IgG Fc tag at the C-terminus.

GeneID:
4059

Accession:
P50895

Predicted Molecular Mass:
82.5 kDa

SDS-PAGE:
85-110 kDa, reducing (R) conditions

Formulation:
Lyophilized from 0.22 μm filtered solution in PBS, pH 7.4. Normally 5% trehalose and 5% mannitol are added as protectants before lyophilization.

Biological Activity

Not tested

Storage and Shipping

Storage:

It is recommended that the protein be aliquoted for optimal storage. Avoid repeated freeze-thaw cycles.

- Until expiry date, -20°C to -80°C as lyophilized proteins.
- 3 months, -20°C to -80°C under sterile conditions after reconstitution.

Shipping:

The product is shipped at ambient temperature. Upon receipt, store it immediately at the recommended temperature.

Reconstitution

Briefly centrifuge the tube before opening. Reconstitute at 0.1-0.5 mg/mL in sterile water.

Background

Basal cell adhesion molecule (Lu/BCAM) is a membrane-bound glycoprotein of the immunoglobulin superfamily (IgSF), functioning as a receptor for the extracellular matrix protein, laminin. BCAM (Lutheran/basal cell-adhesion molecule, a glycoprotein) belongs to the immunoglobulin superfamily which contains both Lu blood group and BCAM tumor-associated antigens. Proteomics analysis suggests that BCAM might be a potential biomarker for pancreatic cancer. BCAM, involved in cell adhesion and migration, can also promote tumor metastasis and has been elucidated to play a functional role in the metastasis of thyroid cancer and gastric cancer.

References

1. Yu KH. et al. (2009) J Proteome Res. 8(3):1565-76.
2. Bernemann TM. et al. (2000) J Cutan Pathol. 27(3):108-11.
3. Zhao J. et al. (2022) Clin Epigenetics. 14(1):99.

Synonyms

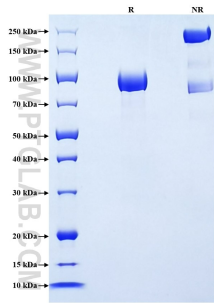
Auberger B antigen, Basal cell adhesion molecule, B-CAM cell surface glycoprotein, CD239, F8/G253 antigen

For technical support and original validation data for this product please contact

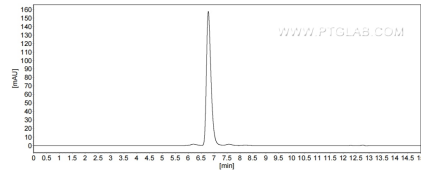
T: 1 (888) 4PTGLAB (1-888-478-4522) (toll free in USA), or 1(312) 455-8498 (outside USA) E: proteintech@ptglab.com W: ptglab.com

This product is exclusively available under Proteintech Group brand and is not available to purchase from any other manufacturer.

Selected Validation Data



Purity of Recombinant Human BCAM was determined by SDS-PAGE. The protein was resolved in an SDS-PAGE in reducing (R) and non-reducing (NR) conditions and stained using Coomassie blue.



The purity of Human BCAM was greater than 90% as determined by SEC-HPLC.