

For Research Use Only

# Recombinant Human CLEC4C protein (rFc Tag)



Catalog Number: Eg2569

## Basic Information

**Species:**  
Human

**Purity:**  
>90 %, SDS-PAGE

**Tag:**  
rFc Tag

## Technical Specifications

**Purity:**  
>90 %, SDS-PAGE

**Endotoxin Level:**  
<0.1 EU/μg protein, LAL method

**Source:**  
HEK293-derived Human CLEC4C protein Asn45-Ile213 (Accession# Q8WTT0-1) with a rabbit IgG Fc tag at the N-terminus.

**GeneID:**  
170482

**Accession:**  
Q8WTT0-1

**Predicted Molecular Mass:**  
47.1 kDa

**SDS-PAGE:**  
50-65 kDa, reducing (R) conditions

**Formulation:**  
Lyophilized from 0.22 μm filtered solution in PBS, pH 7.4. Normally 5% trehalose and 5% mannitol are added as protectants before lyophilization.

## Biological Activity

Not tested

## Storage and Shipping

### Storage:

It is recommended that the protein be aliquoted for optimal storage. Avoid repeated freeze-thaw cycles.

- Until expiry date, -20°C to -80°C as lyophilized proteins.
- 3 months, -20°C to -80°C under sterile conditions after reconstitution.

### Shipping:

The product is shipped at ambient temperature. Upon receipt, store it immediately at the recommended temperature.

## Reconstitution

Briefly centrifuge the tube before opening. Reconstitute at 0.1-0.5 mg/mL in sterile water.

## Background

CLEC4C (C-type lectin domain family 4 member C), also known as DLEC, BDCA-2, CD303, and HECL, is a type II membrane protein that contains C-type lectin domain. The C-type lectin domain family members share a common protein fold and have diverse functions, such as cell adhesion, cell-cell signaling, glycoprotein turnover, and roles in inflammation and immune response. CLEC4C is a specific surface marker of human plasmacytoid dendritic cells, centrally involved in antigen presentation and immune tolerance.

## References

1. Kanazawa N, et al. (2004) Immunobiology. 209(1-2):179-90.
2. McGreal EP, et al. (2004) Mol Immunol. 41(11):1109-21.
3. Wilson NR, et al. (2022) Leuk Lymphoma. 63(1):19-30.
4. Boiocchi L, et al. (2013) Blood. 11;122(2):296-7.

## Synonyms

BDCA 2, BDCA2, BDCA-2, CD303, CLECSF11

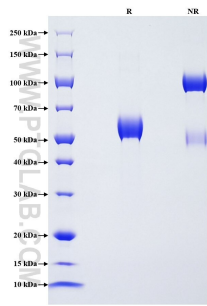
For technical support and original validation data for this product please contact

T: 1 (888) 4PTGLAB (1-888-478-4522) (toll free in USA), or 1(312) 455-8498 (outside USA)

E: proteintech@ptglab.com  
W: ptglab.com

This product is exclusively available under Proteintech Group brand and is not available to purchase from any other manufacturer.

## Selected Validation Data



Purity of Recombinant Human CLEC4C was determined by SDS-PAGE. The protein was resolved in an SDS-PAGE in reducing (R) and non-reducing (NR) conditions and stained using Coomassie blue.