

For Research Use Only

Recombinant Mouse MGL1/CD301a protein (rFc Tag) (HPLC verified)



Catalog Number: Eg2698

Basic Information

Species:
Mouse

Purity:
>90 %, SDS-PAGE
>90 %, SEC-HPLC

Tag:
rFc Tag

Technical Specifications

Purity:
>90 %, SDS-PAGE
>90 %, SEC-HPLC

Endotoxin Level:
<0.1 EU/μg protein, LAL method

Source:
HEK293-derived Mouse MGL1 protein Gln57-Ser304 (Accession# P49300) with a rabbit IgG Fc tag at the C-terminus.

GeneID:
17312

Accession:
P49300

Predicted Molecular Mass:
54.3 kDa

SDS-PAGE:
50-65 kDa, reducing (R) conditions

Formulation:
Lyophilized from 0.22 μm filtered solution in PBS, pH 7.4. Normally 5% trehalose and 5% mannitol are added as protectants before lyophilization.

Biological Activity

Not tested

Storage and Shipping

Storage:

It is recommended that the protein be aliquoted for optimal storage. Avoid repeated freeze-thaw cycles.

- Until expiry date, -20°C to -80°C as lyophilized proteins.
- 3 months, -20°C to -80°C under sterile conditions after reconstitution.

Shipping:

The product is shipped at ambient temperature. Upon receipt, store it immediately at the recommended temperature.

Reconstitution

Briefly centrifuge the tube before opening. Reconstitute at 0.1-0.5 mg/mL in sterile water.

Background

Macrophage galactose-type lectin (MGL) is a type II transmembrane glycoprotein belonging to the type II family of C-type lectin receptors (CLR). MGL is expressed on professional antigen presenting cells. In mice, there are two homologs of human MGL, MGL1 (CD301a), and MGL2 (CD301b). They contain the Gln-Pro-Asp (QPD) sequence in their carbohydrate recognition domain that facilitates galactose or N-acetylgalactosamine (GalNAc) recognition. Murine MGL1 was found to be highly specific for Lewis X and Lewis A structures, whereas mMGL2 recognized N-acetylgalactosamine (GalNAc) and galactose.

References

1. Singh SK, et al. (2009) Mol Immunol. 46(6):1240-9.
2. Denda-Nagai K, et al. (2010) J Biol Chem. 18;285(25):19193-204.
3. Zizzari IG, et al. (2015) J Immunol Res. 2015:450695.

Synonyms

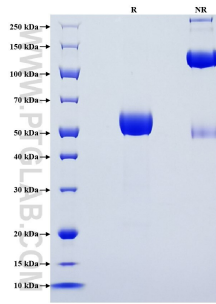
Clec10a, CLEC10A/CD301, C-type lectin domain family 10 member A, Macrophage asialoglycoprotein-binding protein 1, Macrophage galactose/N-acetylgalactosamine-specific lectin

For technical support and original validation data for this product please contact

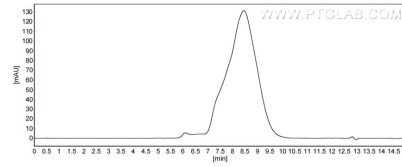
T: 1 (888) 4PTGLAB (1-888-478-4522) (toll free in USA), or 1(312) 455-8498 (outside USA) E: proteintech@ptglab.com W: ptglab.com

This product is exclusively available under Proteintech Group brand and is not available to purchase from any other manufacturer.

Selected Validation Data



Purity of Recombinant Mouse MGL1 was determined by SDS-PAGE. The protein was resolved in an SDS-PAGE in reducing (R) and non-reducing (NR) conditions and stained using Coomassie blue.



The purity of Mouse MGL1/CD301a was greater than 90% as determined by SEC-HPLC.