

For Research Use Only

# Recombinant Mouse MGL2 protein (rFc Tag)



Catalog Number: Eg2727

## Basic Information

**Species:**  
Mouse

**Purity:**  
>90 %, SDS-PAGE

**Tag:**  
rFc Tag

## Technical Specifications

**Purity:**

>90 %, SDS-PAGE

**Endotoxin Level:**

<0.1 EU/μg protein, LAL method

**Source:**

HEK293-derived Mouse MGL2 protein Ser72-Pro332 (Accession# Q8JZN1) with a rabbit IgG Fc tag at the C-terminus.

**GeneID:**

216864

**Accession:**

Q8JZN1

**Predicted Molecular Mass:**

55.9 kDa

**SDS-PAGE:**

50-65 kDa, reducing (R) conditions

**Formulation:**

Lyophilized from 0.22 μm filtered solution in PBS, pH 7.4. Normally 5% trehalose and 5% mannitol are added as protectants before lyophilization.

## Biological Activity

Not tested

## Storage and Shipping

**Storage:**

It is recommended that the protein be aliquoted for optimal storage. Avoid repeated freeze-thaw cycles.

- Until expiry date, -20°C to -80°C as lyophilized proteins.
- 3 months, -20°C to -80°C under sterile conditions after reconstitution.

**Shipping:**

The product is shipped at ambient temperature. Upon receipt, store it immediately at the recommended temperature.

## Reconstitution

Briefly centrifuge the tube before opening. Reconstitute at 0.1-0.5 mg/mL in sterile water.

## Background

Macrophage galactose-type lectin (MGL) is a type II transmembrane glycoprotein belonging to the type II family of C-type lectin receptors (CLR). MGL is expressed on professional antigen presenting cells. In mice, there are two homologs of human MGL, MGL1 (CD301a), and MGL2 (CD301b). They contain the Gln-Pro-Asp (QPD) sequence in their carbohydrate recognition domain that facilitates galactose or N-acetylgalactosamine (GalNAc) recognition. Murine MGL1 was found to be highly specific for Lewis X and Lewis A structures, whereas mMGL2 recognized N-acetylgalactosamine (GalNAc) and galactose.

## References

1. Singh SK, et al. (2009) Mol Immunol. 46(6):1240-9.
2. Denda-Nagai K, et al. (2010) J Biol Chem. 18;285(25):19193-204.
3. Zizzari IG, et al. (2015) J Immunol Res. 2015:450695.

## Synonyms

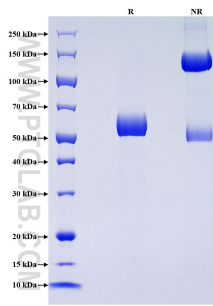
Macrophage galactose N-acetyl-galactosamine specific lectin 2, Macrophage galactose-type C-type lectin 2, Mgl2

For technical support and original validation data for this product please contact

T: 1 (888) 4PTGLAB (1-888-478-4522) (toll free in USA), or 1(312) 455-8498 (outside USA) E: proteintech@ptglab.com W: ptglab.com

This product is exclusively available under Proteintech Group brand and is not available to purchase from any other manufacturer.

## Selected Validation Data



Purity of Recombinant Mouse MGL2 was determined by SDS-PAGE. The protein was resolved in an SDS-PAGE in reducing (R) and non-reducing (NR) conditions and stained using Coomassie blue.