

For Research Use Only

Recombinant Mouse CD300LG protein (rFc Tag)



Catalog Number: Eg2731

Basic Information

Species:
Mouse

Purity:
>90 %, SDS-PAGE

Tag:
rFc Tag

Technical Specifications

Purity:
>90 %, SDS-PAGE

Endotoxin Level:
<0.1 EU/μg protein, LAL method

Source:
HEK293-derived Mouse CD300LG protein Leu19-Ile284 (Accession# Q1ERP8-3) with a rabbit IgG Fc tag at the C-terminus.

GeneID:
52685

Accession:
Q1ERP8-3

Predicted Molecular Mass:
54.5 kDa

SDS-PAGE:
58-100 kDa, reducing (R) conditions

Formulation:
Lyophilized from 0.22 μm filtered solution in PBS, pH 7.4. Normally 5% trehalose and 5% mannitol are added as protectants before lyophilization.

Biological Activity

Not tested

Storage and Shipping

Storage:

It is recommended that the protein be aliquoted for optimal storage. Avoid repeated freeze-thaw cycles.

- Until expiry date, -20°C to -80°C as lyophilized proteins.
- 3 months, -20°C to -80°C under sterile conditions after reconstitution.

Shipping:

The product is shipped at ambient temperature. Upon receipt, store it immediately at the recommended temperature.

Reconstitution

Briefly centrifuge the tube before opening. Reconstitute at 0.1-0.5 mg/mL in sterile water.

Background

CD300LG, also known as CD300 molecule-like family member G, is a part of the CD300 antigen-like family. It is known to have at least four isoforms in both species. The immunoglobulin (Ig) V-like domain of CD300LG exhibits approximately 35% identity to those of the polymeric Ig receptor (pIgR) and Fcα/μR. mouse CD300LG proteins are uniquely expressed on capillary endothelium. CD300LG may play a significant role in molecular transport across the capillary endothelium. In addition, CD300LG is capable of bidirectional transcytosis in assays using polarized MDCK epithelial cells.

References

1. Hiroyuki Takatsu, et al. (2006). *Biochem Biophys Res Commun.* 15:348(1):183-191.
2. Randall S Davis, et al. (2005). *Eur J Immunol.* 35(3):674-680.
3. B.J. Green, et al. (1998). *Int. Immunol.* 10(7):891-899.

Synonyms

CD300 antigen-like family member G, CD300g, Cd300lg, Clm9, CLM-9

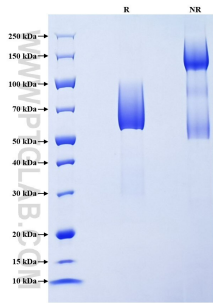
For technical support and original validation data for this product please contact

T: 1 (888) 4PTGLAB (1-888-478-4522) (toll free in USA), or 1(312) 455-8498 (outside USA)

E: proteintech@ptglab.com
W: ptglab.com

This product is exclusively available under Proteintech Group brand and is not available to purchase from any other manufacturer.

Selected Validation Data



Purity of Recombinant Mouse CD300LG was determined by SDS-PAGE. The protein was resolved in an SDS-PAGE in reducing (R) and non-reducing (NR) conditions and stained using Coomassie blue.