

For Research Use Only

# Recombinant Mouse Epha6 protein (rFc Tag)(HPLC verified)



Catalog Number: Eg2857

## Basic Information

**Species:**  
Mouse

**Purity:**  
>90 %, SDS-PAGE<br>>90%, SEC-HPLC

**Tag:**  
rFc Tag

## Technical Specifications

**Purity:**  
>90 %, SDS-PAGE<br>>90%, SEC-HPLC

**Endotoxin Level:**  
<0.1 EU/μg protein, LAL method

**Source:**  
HEK293-derived Mouse Epha6 protein Ser28-Gln546 (Accession# Q62413) with a rabbit IgG Fc tag at the C-terminus.

**GeneID:**  
13840

**Accession:**  
Q62413

**Predicted Molecular Mass:**  
84.1 kDa

**SDS-PAGE:**  
85-110 kDa, reducing (R) conditions

**Formulation:**  
Lyophilized from 0.22 μm filtered solution in PBS, pH 7.4. Normally 5% trehalose and 5% mannitol are added as protectants before lyophilization.

## Biological Activity

Not tested

## Storage and Shipping

### Storage:

It is recommended that the protein be aliquoted for optimal storage. Avoid repeated freeze-thaw cycles.

- Until expiry date, -20°C to -80°C as lyophilized proteins.
- 3 months, -20°C to -80°C under sterile conditions after reconstitution.

### Shipping:

The product is shipped at ambient temperature. Upon receipt, store it immediately at the recommended temperature.

## Reconstitution

Briefly centrifuge the tube before opening. Reconstitute at 0.1-0.5 mg/mL in sterile water.

## Background

Epha6 (Eph receptor A6) is a receptor tyrosine kinase that binds to a mixed GPI-anchored heparin-A family ligand residing on neighboring cells, resulting in contact-dependent bidirectional signaling to neighboring cells. Epha6 plays a critical role in brain development and/or behavioral regulation, and the inactivation of its gene leads to impaired learning and memory. Epha6 is associated with a variety of diseases, its overexpression leads to the progression of human prostate cancer, and EphA6 overexpression has been identified as an important independent prognostic indicator in breast cancer.

## References

1. Das G, et al. Cell Biosci. (2016). 6:48.
2. Zhou D, et al. Oncol Lett. (2018).15(4):5257-5263.
3. Li S, et al. Oncotarget. (2015). 6(26):22587-97.

## Synonyms

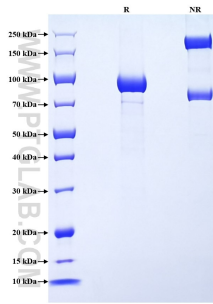
receptor protein-tyrosine kinase, EC:2.7.10.1

For technical support and original validation data for this product please contact

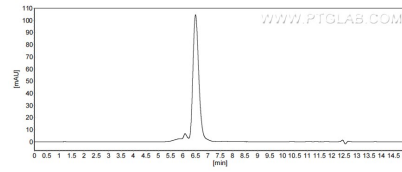
T: 1 (888) 4PTGLAB (1-888-478-4522) (toll free in USA), or 1(312) 455-8498 (outside USA) E: proteintech@ptglab.com  
W: ptglab.com

This product is exclusively available under Proteintech Group brand and is not available to purchase from any other manufacturer.

## Selected Validation Data



Purity of Recombinant Mouse Epha6 was determined by SDS-PAGE. The protein was resolved in an SDS-PAGE in reducing (R) and non-reducing (NR) conditions and stained using Coomassie blue.



The purity of Mouse Epha6 was greater than 90% as determined by SEC-HPLC.