

For Research Use Only

# Recombinant Human CCL15 protein (rFc Tag) (HPLC verified)



Catalog Number: Eg2877

## Basic Information

**Species:**  
Human

**Purity:**  
>90 %, SDS-PAGE  
>90 %, SEC-HPLC

**Tag:**  
rFc Tag

## Technical Specifications

**Purity:**  
>90 %, SDS-PAGE  
>90 %, SEC-HPLC

**Endotoxin Level:**  
<0.1 EU/μg protein, LAL method

**Source:**  
HEK293-derived Human CCL15 protein Ser46-Ile113 (Accession# Q16663) with a rabbit IgG Fc tag at the C-terminus.

**GeneID:**  
6359

**Accession:**  
Q16663

**Predicted Molecular Mass:**  
33.5 kDa

**SDS-PAGE:**  
34-37 kDa, reducing (R) conditions

**Formulation:**  
Lyophilized from 0.22 μm filtered solution in PBS, pH 7.4. Normally 5% trehalose and 5% mannitol are added as protectants before lyophilization.

## Biological Activity

Not tested

## Storage and Shipping

### Storage:

It is recommended that the protein be aliquoted for optimal storage. Avoid repeated freeze-thaw cycles.

- Until expiry date, -20°C to -80°C as lyophilized proteins.
- 3 months, -20°C to -80°C under sterile conditions after reconstitution.

### Shipping:

The product is shipped at ambient temperature. Upon receipt, store it immediately at the recommended temperature.

## Reconstitution

Briefly centrifuge the tube before opening. Reconstitute at 0.1-0.5 mg/mL in sterile water.

## Background

CCL15, also known as macrophage inhibitory protein 5 (MIP-5), leukocyte chemokine 1 (Lkn-1), and human CC chemokine 2 (HCC-2), is a small cytokine that belongs to the CC chemokine family. This family of chemokines is located on human chromosome 17 and shares a gene sequence similarity with CC motif chemokine ligand 5 (CCL5) and CC motif chemokine ligand 3 (CCL3). CCL15 is expressed in certain leukocytes and macrophages in the liver, small intestine, colon, and lung. Chemokines are a class of small molecule proteins that bind to the corresponding cell surface receptors and participate in a variety of physiological, pathological, and immunological processes (PMID: 30881115).

## References

1. Zu G. et al. (2019). Cancer Manag Res. 11:1881-1892.

## Synonyms

C C motif chemokine 15, CCL-15, Chemokine CC 2

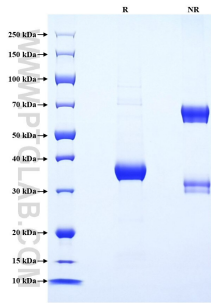
For technical support and original validation data for this product please contact

T: 1 (888) 4PTGLAB (1-888-478-4522) (toll free in USA), or 1(312) 455-8498 (outside USA)

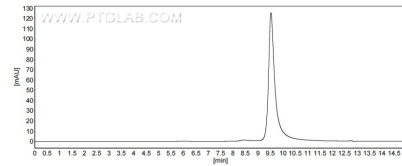
E: [proteintech@ptglab.com](mailto:proteintech@ptglab.com)  
W: [ptglab.com](http://ptglab.com)

This product is exclusively available under Proteintech Group brand and is not available to purchase from any other manufacturer.

## Selected Validation Data



Purity of Recombinant Human CCL15 was determined by SDS-PAGE. The protein was resolved in an SDS-PAGE in reducing (R) and non-reducing (NR) conditions and stained using Coomassie blue.



The purity of Human CCL15 was greater than 90% as determined by SEC-HPLC.