

For Research Use Only

Recombinant Human INSL4 protein (rFc Tag)(HPLC verified)



Catalog Number: Eg2884

Basic Information

Species:
Human

Purity:
>90 %, SDS-PAGE
>90 %, SEC-HPLC

Tag:
rFc Tag

Technical Specifications

Purity:
>90 %, SDS-PAGE
>90 %, SEC-HPLC

Endotoxin Level:
<0.1 EU/μg protein, LAL method

Source:
HEK293-derived Human INSL4 protein Ala26-Thr139 (Accession# Q14641) with a rabbit IgG Fc tag at the C-terminus.

GeneID:
3641

Accession:
Q14641

Predicted Molecular Mass:
38.6 kDa

SDS-PAGE:
28-33 kDa, reducing (R) conditions

Formulation:
Lyophilized from 0.22 μm filtered solution in PBS, pH 7.4. Normally 5% trehalose and 5% mannitol are added as protectants before lyophilization.

Biological Activity

Not tested

Storage and Shipping

Storage:

It is recommended that the protein be aliquoted for optimal storage. Avoid repeated freeze-thaw cycles.

- Until expiry date, -20°C to -80°C as lyophilized proteins.
- 3 months, -20°C to -80°C under sterile conditions after reconstitution.

Shipping:

The product is shipped at ambient temperature. Upon receipt, store it immediately at the recommended temperature.

Reconstitution

Briefly centrifuge the tube before opening. Reconstitute at 0.1-0.5 mg/mL in sterile water.

Background

The early placental insulin-like peptide, (EPIL or INSL4) is also a member of the insulin superfamily, it has the most homology with the human relaxins, RLN1 and RLN2 (44% and 43% respectively), and only 15% homology to insulin. It was initially identified from a subtracted cDNA library of a first trimester placenta, and was shown to be most highly expressed in embryonic and trophoblastic tissues.

References

1. Chassin D, et al. (1995). Genomics. 29:465-470.
2. Lin F, et al. (2004). J Pept Sci. 10:257-264.
3. Koman A, et al. (1996). J Biol Chem. 271:20238-20241.
4. Laurent A, et al. (1998). Mol Reprod Dev. 51:123-129.

Synonyms

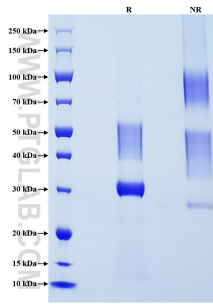
Early placenta insulin-like peptide, Early placenta insulin-like peptide A chain, Early placenta insulin-like peptide B chain, EPIL, INSL 4

For technical support and original validation data for this product please contact

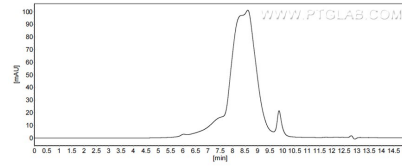
T: 1 (888) 4PTGLAB (1-888-478-4522) (toll free in USA), or 1(312) 455-8498 (outside USA) E: proteintech@ptglab.com W: ptglab.com

This product is exclusively available under Proteintech Group brand and is not available to purchase from any other manufacturer.

Selected Validation Data



Purity of Recombinant Human INSL4 was determined by SDS-PAGE. The protein was resolved in an SDS-PAGE in reducing (R) and non-reducing (NR) conditions and stained using Coomassie blue.



The purity of Human INSL4 was greater than 90% as determined by SEC-HPLC.