

For Research Use Only

Recombinant Mouse CCL6 protein (rFc Tag)



Catalog Number: Eg2957

Basic Information

Species:
Mouse

Purity:
>90 %, SDS-PAGE

Tag:
C-rFc

Technical Specifications

Purity:
>90 %, SDS-PAGE

Endotoxin Level:
<0.1 EU/μg protein, LAL method

Source:
HEK293-derived Mouse CCL6 protein Gly22-Ala116 (Accession# P27784) with a rabbit IgG Fc tag at the C-terminus.

GeneID:
20305

Accession:
P27784

Predicted Molecular Mass:
36.8 kDa

SDS-PAGE:
37-43 kDa, reducing (R) conditions

Formulation:
Lyophilized from 0.22 μm filtered solution in PBS, pH 7.4. Normally 5% trehalose and 5% mannitol are added as protectants before lyophilization.

Biological Activity

Not tested

Storage and Shipping

Storage:

It is recommended that the protein be aliquoted for optimal storage. Avoid repeated freeze-thaw cycles.

- Until expiry date, -20°C to -80°C as lyophilized proteins.
- 3 months, -20°C to -80°C under sterile conditions after reconstitution.

Shipping:

The product is shipped at ambient temperature. Upon receipt, store it immediately at the recommended temperature.

Reconstitution

Briefly centrifuge the tube before opening. Reconstitute at 0.1-0.5 mg/mL in sterile water.

Background

CCL6 is a selective CCR1 ligand, and although it does not exist in humans, it is considered to have the human orthologs CCL15 and CCL23. Further investigation is needed to determine the role of CCL6 after PNS and CNS injury, and it would also be worthwhile to investigate the role of CCL15 and CCL23 in patients.

References

1. Li F., et al. *Sci. Adv.* 2021;7:5943–5969.
2. Kanno M., et al. *J. Neuroimmunol.* 2005;167:72–80.
3. Du X., et al. *Signal Transduct. Target. Ther.* 2021 6(1). 2021;6:91.

Synonyms

C10, C-C motif chemokine 6, Ccl6, CCL6(22-95), CCL6(23-95)

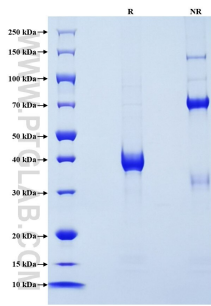
For technical support and original validation data for this product please contact

T: 1 (888) 4PTGLAB (1-888-478-4522) (toll free in USA), or 1(312) 455-8498 (outside USA)

E: proteintech@ptglab.com
W: ptglab.com

This product is exclusively available under Proteintech Group brand and is not available to purchase from any other manufacturer.

Selected Validation Data



Purity of Recombinant Mouse Ccl6 was determined by SDS-PAGE. The protein was resolved in an SDS-PAGE in reducing (R) and non-reducing (NR) conditions and stained using Coomassie blue.