

For Research Use Only

Recombinant Mouse CGA protein (rFc Tag)



Catalog Number: Eg3094

Basic Information

Species:
Mouse

Purity:
>90 %, SDS-PAGE

Tag:
rFc Tag

Technical Specifications

Purity:

>90 %, SDS-PAGE

Endotoxin Level:

<0.1 EU/μg protein, LAL method

Source:

HEK293-derived Mouse CGA protein Leu25-Tyr116 (Accession# P01216) with a rabbit IgG Fc tag at the C-terminus.

GeneID:

12640

Accession:

P01216

Predicted Molecular Mass:

36.2 kDa

SDS-PAGE:

40-50 kDa, reducing (R) conditions

Formulation:

Lyophilized from 0.22 μm filtered solution in PBS, pH 7.4. Normally 5% trehalose and 5% mannitol are added as protectants before lyophilization.

Biological Activity

Not tested

Storage and Shipping

Storage:

It is recommended that the protein be aliquoted for optimal storage. Avoid repeated freeze-thaw cycles.

- Until expiry date, -20°C to -80°C as lyophilized proteins.
- 3 months, -20°C to -80°C under sterile conditions after reconstitution.

Shipping:

The product is shipped at ambient temperature. Upon receipt, store it immediately at the recommended temperature.

Reconstitution

Briefly centrifuge the tube before opening. Reconstitute at 0.1-0.5 mg/mL in sterile water.

Background

CGA (Chromogranin A), known as Chromogranin A, is an acidic, hydrophilic protein consisting of 439 amino acids with a molecular mass of approximately 48 kDa. It is a member of the neuropeptide family and is widely distributed in the neuroendocrine system. CGA has been an attractive therapeutic target and candidate biomarker for a variety of cardiovascular, neurological, and inflammatory diseases. CgA concentration is used as a diagnostic marker in hypertensive pheochromocytoma patients. (PMID: 36902417) Plasma CGA levels are diagnostic in prostate cancer and are particularly important in the monitoring and diagnosis of prostate-specific antigen-negative or progressive prostate cancer with distant metastases.

References

1. Bralawska M, et al. Int J Mol Sci. 2023;24(5):4986.
2. Ploussard G, et al. World J Urol. 2023;41(2):361-369.
3. Laguerre F, et al. IUBMB Life. 2020;72(4):524-532.
4. Iyer DR, et al. Cell Mol Life Sci. 2023;80(9):271.

Synonyms

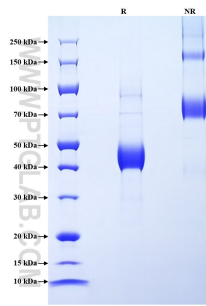
Anterior pituitary glycoprotein hormones common subunit alpha, Cga, Follicle-stimulating hormone alpha chain, Follitropin alpha chain, FSH-alpha

For technical support and original validation data for this product please contact

T: 1 (888) 4PTGLAB (1-888-478-4522) (toll free in USA), or 1(312) 455-8498 (outside USA) E: proteintech@ptglab.com
W: ptglab.com

This product is exclusively available under Proteintech Group brand and is not available to purchase from any other manufacturer.

Selected Validation Data



Purity of Recombinant Mouse Cga was determined by SDS-PAGE. The protein was resolved in an SDS-PAGE in reducing (R) and non-reducing (NR) conditions and stained using Coomassie blue.