

For Research Use Only

# Recombinant Mouse TFPI protein (rFc Tag)



Catalog Number: Eg3128

## Basic Information

**Species:**  
Mouse

**Purity:**  
>90 %, SDS-PAGE

**Tag:**  
rFc Tag

## Technical Specifications

**Purity:**

>90 %, SDS-PAGE

**Endotoxin Level:**

<0.1 EU/μg protein, LAL method

**Source:**

HEK293-derived Mouse TFPI protein Leu29-Lys289 (Accession# O54819-1) with a rabbit IgG Fc tag at the C-terminus.

**GeneID:**

21788

**Accession:**

O54819-1

**Predicted Molecular Mass:**

55.7 kDa

**SDS-PAGE:**

60-70 kDa, reducing (R) conditions

**Formulation:**

Lyophilized from 0.22 μm filtered solution in PBS, pH 7.4. Normally 5% trehalose and 5% mannitol are added as protectants before lyophilization.

## Biological Activity

Not tested

## Storage and Shipping

**Storage:**

It is recommended that the protein be aliquoted for optimal storage. Avoid repeated freeze-thaw cycles.

- Until expiry date, -20°C to -80°C as lyophilized proteins.
- 3 months, -20°C to -80°C under sterile conditions after reconstitution.

**Shipping:**

The product is shipped at ambient temperature. Upon receipt, store it immediately at the recommended temperature.

## Reconstitution

Briefly centrifuge the tube before opening. Reconstitute at 0.1-0.5 mg/mL in sterile water.

## Background

Tissue Factor Pathway Inhibitor (TFPI), also known as TFPI1, EPI, LACI, or TFI, encodes a Kunitz-type serine protease inhibitor that plays a pivotal role in regulating the blood coagulation process. TFPI reduces the development of atherosclerosis by regulating tissue factor (TF) mediated coagulation pathway. Changes in the expression of tissue factor pathway inhibitor (TFPI), thrombomodulin, selectins, and adhesion molecules in pulmonary endothelial cells as well as complex regulation and interaction of vasoactive substances and growth factors released from endothelium may underlie the mechanisms of pulmonary endothelial dysfunction in COPD.

## References

1. Yuan HQ. et al. (2019). Clin Chim Acta. 491:97-102.
2. Yang Q. (2008). Curr Drug Metab. 9(7):661-7.

## Synonyms

EPI, Extrinsic pathway inhibitor, LACI, Lipoprotein-associated coagulation inhibitor, TFPI

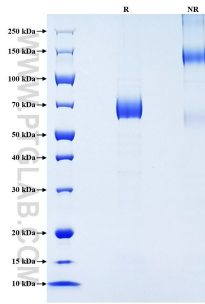
For technical support and original validation data for this product please contact

T: 1 (888) 4PTGLAB (1-888-478-4522) (toll free in USA), or 1(312) 455-8498 (outside USA)

E: [proteintech@ptglab.com](mailto:proteintech@ptglab.com)  
W: [ptglab.com](http://ptglab.com)

This product is exclusively available under Proteintech Group brand and is not available to purchase from any other manufacturer.

## Selected Validation Data



Purity of Recombinant Mouse TFPI was determined by SDS-PAGE. The protein was resolved in an SDS-PAGE in reducing (R) and non-reducing (NR) conditions and stained using Coomassie blue.