

For Research Use Only

Recombinant Human CCL16 protein (rFc Tag) (HPLC verified)



Catalog Number: Eg3134

Basic Information

Species:
Human

Purity:
>90 %, SDS-PAGE
>90%, SEC-HPLC

Tag:
rFc Tag

Technical Specifications

Purity:
>90 %, SDS-PAGE
>90%, SEC-HPLC

Endotoxin Level:
<0.1 EU/μg protein, LAL method

Source:
HEK293-derived Human CCL16 protein Gln24-Gln120 (Accession# O15467) with a rabbit IgG Fc tag at the C-terminus.

GeneID:
6360

Accession:
O15467

Predicted Molecular Mass:
37.2 kDa

SDS-PAGE:
38-48 kDa, reducing (R) conditions

Formulation:
Lyophilized from 0.22 μm filtered solution in PBS, pH 7.4. Normally 5% trehalose and 5% mannitol are added as protectants before lyophilization.

Biological Activity

Not tested

Storage and Shipping

Storage:

It is recommended that the protein be aliquoted for optimal storage. Avoid repeated freeze-thaw cycles.

- Until expiry date, -20°C to -80°C as lyophilized proteins.
- 3 months, -20°C to -80°C under sterile conditions after reconstitution.

Shipping:

The product is shipped at ambient temperature. Upon receipt, store it immediately at the recommended temperature.

Reconstitution

Briefly centrifuge the tube before opening. Reconstitute at 0.1-0.5 mg/mL in sterile water.

Background

Chemokine (C-C motif) ligand 16 (CCL16), also known as LEC (Liver-expressed chemokine), Monotactin-1 (MTN-1), IL-10-inducible chemokine, etc., is a small-molecule cytokine that belongs to CC chemokine family. CCL16 is expressed predominantly in the liver, thymus and spleen and has chemotactic activity towards lymphocytes and monocytes, playing a role in immunity and inflammation. (PMID: 33500726) CCL16 affects cells by binding to cell surface chemokine receptors (i.e., CCR1, CCR2, CCR5, and CCR8), and is also of interest in the tumor microenvironment, where it may influence tumor progression by modulating the tumor immune microenvironment. Studies have shown that CCL16 is a prognostic biomarker for triple-negative breast and lung cancer metastases.

References

1. Shen W, et al. Theranostics. 2021;11(5):2297-2317.
2. Weiergräber OH, et al. Biomolecules. 2022;12(11):1588.
3. Chi HC, et al. Am J Cancer Res. 2024;14(7):3600-3613.
4. Dai Z, et al. Front Immunol. 2024;14:1299953.

Synonyms

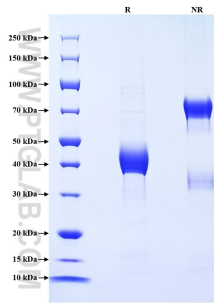
CCL16/LEC, C C motif chemokine 16, CCL 16, CCL-16

For technical support and original validation data for this product please contact

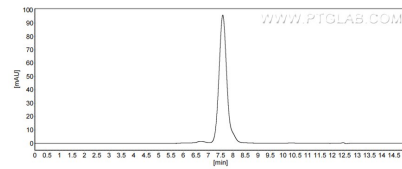
T: 1 (888) 4PTGLAB (1-888-478-4522) (toll free in USA), or 1(312) 455-8498 (outside USA) E: proteintech@ptglab.com
W: ptglab.com

This product is exclusively available under Proteintech Group brand and is not available to purchase from any other manufacturer.

Selected Validation Data



Purity of Recombinant Human CCL16 was determined by SDS-PAGE. The protein was resolved in an SDS-PAGE in reducing (R) and non-reducing (NR) conditions and stained using Coomassie blue.



The purity of Human MerTK was greater than 90% as determined by SEC-HPLC.