

For Research Use Only

Recombinant Mouse CCL1 protein (rFc Tag)



Catalog Number: Eg3293

Basic Information

Species:
Mouse

Purity:
>90 %, SDS-PAGE

Tag:
rFc Tag

Technical Specifications

Purity:
>90 %, SDS-PAGE

Endotoxin Level:
<0.1 EU/μg protein, LAL method

Source:
HEK293-derived Mouse CCL1 protein Lys24-Cys92 (Accession# P10146-1) with a rabbit IgG Fc tag at the N-terminus.

GeneID:
20290

Accession:
P10146-1

Predicted Molecular Mass:
35.0 kDa

SDS-PAGE:
37-45 kDa, reducing (R) conditions

Formulation:
Lyophilized from 0.22 μm filtered solution in PBS, pH 7.4. Normally 5% trehalose and 5% mannitol are added as protectants before lyophilization.

Biological Activity

Not tested

Storage and Shipping

Storage:
It is recommended that the protein be aliquoted for optimal storage. Avoid repeated freeze-thaw cycles.

- Until expiry date, -20°C to -80°C as lyophilized proteins.
- 3 months, -20°C to -80°C under sterile conditions after reconstitution.

Shipping:
The product is shipped at ambient temperature. Upon receipt, store it immediately at the recommended temperature.

Reconstitution

Briefly centrifuge the tube before opening. Reconstitute at 0.1-0.5 mg/mL in sterile water.

Background

CCL1, also known as I-309 in human or TCA-3 in mice, is a small glycoprotein belonging to the CC chemokine family. It is predominantly expressed by activated T cells, monocytes, and endothelial cells, and primarily acts as a chemoattractant for monocytes and T cells. CCL1 binds to the receptor CCR8, which is expressed on monocytes, neutrophils, and T cells, including within the thymus. This chemokine may perform dual functions: as an inflammatory chemokine during leukocyte migration into inflammatory sites and as a constitutive chemokine during T cell selection in the thymus. Furthermore, CCL1 has been associated with allergic inflammation and the recruitment of Th2 cells, suggesting a role in allergic diseases such as asthma.

References

1. Miller MD, Krangel MS. (1992). Proc Natl Acad Sci U S A. 89 (7).
2. Kuehnemuth B, et al. (2018) BMC Cancer. 18 (1):1278.

Synonyms

C-C motif chemokine 1, Ccl1, P500, Scya1, SIS-epsilon

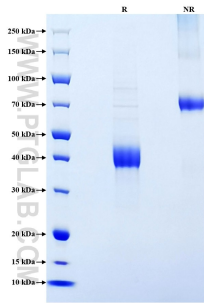
For technical support and original validation data for this product please contact

T: 1 (888) 4PTGLAB (1-888-478-4522) (toll free in USA), or 1(312) 455-8498 (outside USA)

E: proteintech@ptglab.com
W: ptglab.com

This product is exclusively available under Proteintech Group brand and is not available to purchase from any other manufacturer.

Selected Validation Data



Purity of Recombinant Mouse CCL1 was determined by SDS-PAGE. The protein was resolved in an SDS-PAGE in reducing (R) and non-reducing (NR) conditions and stained using Coomassie blue.