

For Research Use Only

Recombinant Mouse CCL20/MIP-3 alpha protein (rFc Tag)



Catalog Number: Eg3311

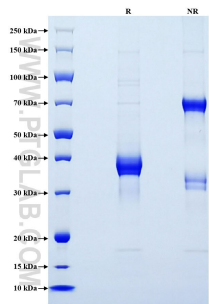
Basic Information	Species: Mouse	Purity: >90 %, SDS-PAGE	Tag: rFc Tag
Technical Specifications	<p>Purity: >90 %, SDS-PAGE</p> <p>Endotoxin Level: <0.1 EU/μg protein, LAL method</p> <p>Source: HEK293-derived Mouse CCL20 protein Ser28-Met96 (Accession# Q642U4) with a rabbit IgG Fc tag at the C-terminus.</p> <p>GeneID: 20297</p> <p>Accession: Q642U4</p> <p>Predicted Molecular Mass: 34.2 kDa</p> <p>SDS-PAGE: 35-40 kDa, reducing (R) conditions</p> <p>Formulation: Lyophilized from 0.22 μm filtered solution in PBS, pH 7.4. Normally 5% trehalose and 5% mannitol are added as protectants before lyophilization.</p>		
Biological Activity	Not tested		
Storage and Shipping	<p>Storage: It is recommended that the protein be aliquoted for optimal storage. Avoid repeated freeze-thaw cycles.</p> <ul style="list-style-type: none">• Until expiry date, -20°C to -80°C as lyophilized proteins.• 3 months, -20°C to -80°C under sterile conditions after reconstitution. <p>Shipping: The product is shipped at ambient temperature. Upon receipt, store it immediately at the recommended temperature.</p>		
Reconstitution	Briefly centrifuge the tube before opening. Reconstitute at 0.1-0.5 mg/mL in sterile water.		
Background	<p>CCL20, also known as MIP-3 alpha, is a chemokine expressed mainly in the lymphatic tissue, lung and liver produced by cells related with inflammation and autoimmune response such as endothelial cells, neutrophils, natural killer (NK), Th17 cells and B cells among others. CCL20 contributes to inflammatory cell recruitment. CCL20 selectively signals through its receptor CCR6. The ligand-receptor pair CCL20/CCR6 is responsible for the chemoattraction of immature dendritic cells, effector/memory T cells and B cells, and also serves a role in the skin and mucosal surfaces under homeostatic and inflammatory conditions, as well as in pathological processes, such as those associated with cancer and rheumatoid arthritis.</p>		
References	<ol style="list-style-type: none">1. Schutysen E. et al. (2003). Cytokine Growth Factor Rev. 14(5):409-26.2. Hromas R. et al. (1997). Blood. 89(9):3315-22.3. Shimizu Y. et al. (2001). Hepatology. 34(2):311-9.4. Lee AY. et al. (2013). Front Immunol. 4:194.		
Synonyms	Beta-chemokine exodus-1, CC chemokine LARC, CC chemokine ST38, C-C motif chemokine 20, CCL 20		

For technical support and original validation data for this product please contact

T: 1 (888) 4PTGLAB (1-888-478-4522) (toll free in USA), or 1(312) 455-8498 (outside USA) E: proteintech@ptglab.com
W: ptglab.com

This product is exclusively available under Proteintech Group brand and is not available to purchase from any other manufacturer.

Selected Validation Data



Purity of Recombinant Mouse CCL20 was determined by SDS-PAGE. The protein was resolved in an SDS-PAGE in reducing (R) and non-reducing (NR) conditions and stained using Coomassie blue.