

For Research Use Only

Recombinant Human PSG1 protein (rFc Tag)



Catalog Number: Eg3704

Basic Information

Species:
Human

Purity:
>90 %, SDS-PAGE

Tag:
rFc Tag

Technical Specifications

Purity:

>90 %, SDS-PAGE

Endotoxin Level:

<0.1 EU/μg protein, LAL method

Source:

HEK293-derived Human PSG1 protein Gln35-Pro419 (Accession# P11464-1) with a rabbit IgG Fc tag at the C-terminus.

GeneID:

5669

Accession:

P11464-1

Predicted Molecular Mass:

69.8 kDa

SDS-PAGE:

80-90 kDa, reducing (R) conditions

Formulation:

Lyophilized from 0.22 μm filtered solution in PBS, pH 7.4. Normally 5% trehalose and 5% mannitol are added as protectants before lyophilization.

Biological Activity

Not tested

Storage and Shipping

Storage:

It is recommended that the protein be aliquoted for optimal storage. Avoid repeated freeze-thaw cycles.

- Until expiry date, -20°C to -80°C as lyophilized proteins.
- 3 months, -20°C to -80°C under sterile conditions after reconstitution.

Shipping:

The product is shipped at ambient temperature. Upon receipt, store it immediately at the recommended temperature.

Reconstitution

Briefly centrifuge the tube before opening. Reconstitute at 0.1-0.5 mg/mL in sterile water.

Background

Pregnancy-specific β-glycoprotein 1 (PSG1) is synthesized by the human placenta and is secreted into the maternal circulation in increasing concentration from the time of trophoblast differentiation until term. PSG1 is the most abundantly expressed of the 11 different PSG genes, which reach a median concentration of 168 μg/mL at week 36 of pregnancy, when a plateau is reached.

References

1. Zhou GQ, et al. Placenta. 1997;18(7):491-501.
2. Pluta M, et al. Arch Gynecol. 1979;227(4):327-336.

Synonyms

B1G1, CD66 antigen-like family member F, CD66f, DHFRP2, Fetal liver non-specific cross-reactive antigen 1/2

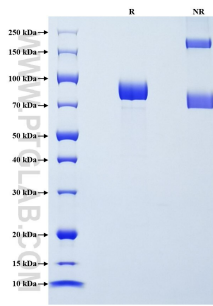
For technical support and original validation data for this product please contact

T: 1 (888) 4PTGLAB (1-888-478-4522) (toll free in USA), or 1(312) 455-8498 (outside USA)

E: proteintech@ptglab.com
W: ptglab.com

This product is exclusively available under Proteintech Group brand and is not available to purchase from any other manufacturer.

Selected Validation Data



Purity of Recombinant Human PSG1 was determined by SDS-PAGE. The protein was resolved in an SDS-PAGE in reducing (R) and non-reducing (NR) conditions and stained using Coomassie blue.