

For Research Use Only

Recombinant Human LILRA6 protein (rFc Tag)



Catalog Number: Eg3776

Basic Information

Species:
Human

Purity:
>90 %, SDS-PAGE

Tag:
rFc Tag

Technical Specifications

Purity:
>90 %, SDS-PAGE

Endotoxin Level:
<0.1 EU/μg protein, LAL method

Source:
HEK293-derived Human LILRA6 protein Gly24-Asn447 (Accession# Q6PI73-1) with a rabbit IgG Fc tag at the C-terminus.

GeneID:
79168

Accession:
Q6PI73-1

Predicted Molecular Mass:
72.6 kDa

SDS-PAGE:
80-90 kDa, reducing (R) conditions

Formulation:
Lyophilized from 0.22 μm filtered solution in PBS, pH 7.4. Normally 5% trehalose and 5% mannitol are added as protectants before lyophilization.

Biological Activity

Not tested

Storage and Shipping

Storage:
It is recommended that the protein be aliquoted for optimal storage. Avoid repeated freeze-thaw cycles.

- Until expiry date, -20°C to -80°C as lyophilized proteins.
- 3 months, -20°C to -80°C under sterile conditions after reconstitution.

Shipping:
The product is shipped at ambient temperature. Upon receipt, store it immediately at the recommended temperature.

Reconstitution

Briefly centrifuge the tube before opening. Reconstitute at 0.1-0.5 mg/mL in sterile water.

Background

Leukocyte immunoglobulin-like receptor subfamily A member 6 belongs to the leukocyte immunoglobulin-like receptors (LILRs, also known as ILTs and LIRs). Among 11 family members, inhibitory LILRB3 (ILT5, LIR3) and activating LILRA6 (ILT8) represent a unique homologous receptor pair characterized by highly polymorphic ectodomains.

References

1. Bashirova AA, et al. (2023) Immunogenetics. 75(3):263-267.
2. Lopez-Alvarez MR, et al. (2014) Immunogenetics. 66:73-83.

Synonyms

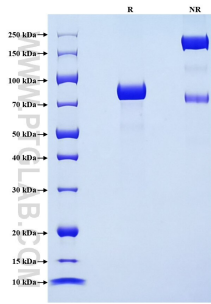
Leucocyte Ig-Like Receptor A6, Leukocyte immunoglobulin-like receptor subfamily A member 6

For technical support and original validation data for this product please contact

T: 1 (888) 4PTGLAB (1-888-478-4522) (toll free in USA), or 1(312) 455-8498 (outside USA) E: proteintech@ptglab.com
W: ptglab.com

This product is exclusively available under Proteintech Group brand and is not available to purchase from any other manufacturer.

Selected Validation Data



Purity of Recombinant Human LILRA6 was determined by SDS-PAGE. The protein was resolved in an SDS-PAGE in reducing (R) and non-reducing (NR) conditions and stained using Coomassie blue.