

For Research Use Only

Recombinant Human ALPI protein (rFc Tag)



Catalog Number: Eg3947

Basic Information

Species:
Human

Purity:
>90 %, SDS-PAGE

Tag:
rFc Tag

Technical Specifications

Purity:
>90 %, SDS-PAGE

Endotoxin Level:
<0.1 EU/μg protein, LAL method

Source:
HEK293-derived Human ALPI protein Val20-Asp503 (Accession# P09923) with a rabbit IgG Fc tag at the C-terminus.

GeneID:
248

Accession:
P09923

Predicted Molecular Mass:
78.7 kDa

SDS-PAGE:
83-100 kDa, reducing (R) conditions

Formulation:
Lyophilized from 0.22 μm filtered solution in PBS, pH 7.4. Normally 5% trehalose and 5% mannitol are added as protectants before lyophilization.

Biological Activity

Not tested

Storage and Shipping

Storage:

It is recommended that the protein be aliquoted for optimal storage. Avoid repeated freeze-thaw cycles.

- Until expiry date, -20°C to -80°C as lyophilized proteins.
- 3 months, -20°C to -80°C under sterile conditions after reconstitution.

Shipping:

The product is shipped at ambient temperature. Upon receipt, store it immediately at the recommended temperature.

Reconstitution

Briefly centrifuge the tube before opening. Reconstitute at 0.1-0.5 mg/mL in sterile water.

Background

There are at least four alkaline phosphatase isozymes (ALPs), i.e., tissue-unspecific (liver/bone/kidney), intestinal (I-), placental (P-) and germ cell or placental-like (P-like). IAP (Intestinal-type alkaline phosphatase), also known as ALPI, is found exclusively in tubuloepithelial cells of the S3-segment of the proximal tubule. IAP is mainly distributed in the intestines, but exiguous synthesis has been observed in kidney, liver, and lung tissue. The sucrase and IAP are useful functional markers for intestinal epithelial cell-type cancer cells.

References

1. Verpooten, G. F., et al. (1989). *Kidney Int.* Oct;36(4):617-25.
2. Giatromanolaki A, et al. (2002). *Semin Oncol.* Dec;29(6 Suppl 19):14-21.
3. Nakamura W, et al. (1998). *Jpn J Cancer Res.* Feb;89(2):186-91.
4. Harada T, et al. (2003). *Am J Physiol Gastrointest Liver Physiol.* Feb;284(2):G255-G262.

Synonyms

EC:3.1.3.1, IAP, Intestinal alkaline phosphatase, Intestinal-type alkaline phosphatase

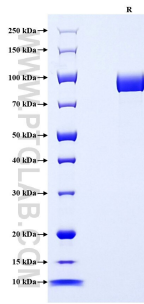
For technical support and original validation data for this product please contact

T: 1 (888) 4PTGLAB (1-888-478-4522) (toll free in USA), or 1(312) 455-8498 (outside USA)

E: proteintech@ptglab.com
W: ptglab.com

This product is exclusively available under Proteintech Group brand and is not available to purchase from any other manufacturer.

Selected Validation Data



Purity of Recombinant Human ALPI was determined by SDS-PAGE. The protein was resolved in an SDS-PAGE in reducing (R) conditions and stained using Coomassie blue.