

For Research Use Only

Recombinant Human KIR3DL1 protein (rFc Tag)



Catalog Number: Eg4226

Basic Information

Species:
Human

Purity:
>90 %, SDS-PAGE

Tag:
rFc Tag

Technical Specifications

Purity:
>90 %, SDS-PAGE

Endotoxin Level:
<0.1 EU/μg protein, LAL method

Source:
HEK293-derived Human KIR3DL1 protein His22-His340 (Accession# Q8N6C9) with a rabbit IgG Fc tag at the C-terminus.

GeneID:
3811

Accession:
Q8N6C9

Predicted Molecular Mass:
61.5 kDa

SDS-PAGE:
70-85 kDa, reducing (R) conditions

Formulation:
Lyophilized from 0.22 μm filtered solution in PBS, pH 7.4. Normally 5% trehalose and 5% mannitol are added as protectants before lyophilization.

Biological Activity

Not tested

Storage and Shipping

Storage:

It is recommended that the protein be aliquoted for optimal storage. Avoid repeated freeze-thaw cycles.

- Until expiry date, -20°C to -80°C as lyophilized proteins.
- 3 months, -20°C to -80°C under sterile conditions after reconstitution.

Shipping:

The product is shipped at ambient temperature. Upon receipt, store it immediately at the recommended temperature.

Reconstitution

Briefly centrifuge the tube before opening. Reconstitute at 0.1-0.5 mg/mL in sterile water.

Background

Killer cell immunoglobulin-like receptors (KIRs) are transmembrane glycoproteins expressed by natural killer cells and subsets of T cells. The KIR proteins are classified by the number of extracellular immunoglobulin domains (2D or 3D) and by whether they have a long (L) or short (S) cytoplasmic domain. KIR3DL1 is a receptor on natural killer (NK) cells for HLA Bw4 allele. It inhibits the activity of NK cells thus preventing cell lysis. KIR3DL1 and KIR3DS1 are highly homologous.

References

1. O'Connor GM, et al. (2013). Crit Rev Immunol. 33(3):203-18.
2. Martin A M, et al. (2000). Immunogenetics, 51(4-5), 268-280.
3. Díaz-Peña R., et al. (2010). Arthritis Rheum. Apr;62(4):1000-6.

Synonyms

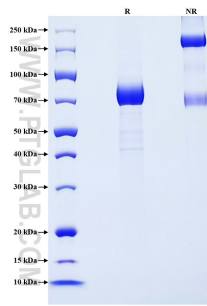
CD158 antigen-like family member E, CD158E, CD158E1, HLA-BW4-specific inhibitory NK cell receptor, Killer cell immunoglobulin-like receptor 3DL1

For technical support and original validation data for this product please contact

T: 1 (888) 4PTGLAB (1-888-478-4522) (toll free in USA), or 1(312) 455-8498 (outside USA) E: proteintech@ptglab.com
W: ptglab.com

This product is exclusively available under Proteintech Group brand and is not available to purchase from any other manufacturer.

Selected Validation Data



Purity of Recombinant Human KIR3DL1 was determined by SDS-PAGE. The protein was resolved in an SDS-PAGE in reducing (R) and non-reducing (NR) conditions and stained using Coomassie blue.