

For Research Use Only

# Recombinant Human CCL23 protein (rFc Tag) (HPLC verified)



Catalog Number: Eg4244

## Basic Information

**Species:**  
Human

**Purity:**  
>90 %, SDS-PAGE<br>>90%, SEC-HPLC

**Tag:**  
rFc Tag

## Technical Specifications

**Purity:**  
>90 %, SDS-PAGE<br>>90%, SEC-HPLC

**Endotoxin Level:**  
<0.1 EU/μg protein, LAL method

**Source:**  
HEK293-derived Human CCL23 protein Arg22-Asn120 (Accession# P55773-1) with a rabbit IgG Fc tag at the N-terminus.

**GeneID:**  
6368

**Accession:**  
P55773-1

**Predicted Molecular Mass:**  
38.6 kDa

**SDS-PAGE:**  
36-45 kDa, reducing (R) conditions

**Formulation:**  
Lyophilized from 0.22 μm filtered solution in PBS, pH 7.4. Normally 5% trehalose and 5% mannitol are added as protectants before lyophilization.

## Biological Activity

Not tested

## Storage and Shipping

### Storage:

It is recommended that the protein be aliquoted for optimal storage. Avoid repeated freeze-thaw cycles.

- Until expiry date, -20°C to -80°C as lyophilized proteins.
- 3 months, -20°C to -80°C under sterile conditions after reconstitution.

### Shipping:

The product is shipped at ambient temperature. Upon receipt, store it immediately at the recommended temperature.

## Reconstitution

Briefly centrifuge the tube before opening. Reconstitute at 0.1-0.5 mg/mL in sterile water.

## Background

CCL23, or C-C motif chemokine ligand 23, is a protein that belongs to the CC chemokine family, which plays a crucial role in immunoregulation and inflammation. It is one of several chemokine genes clustered on the q-arm of chromosome 17. CCL23 is also upregulated in certain diseases, such as streptococcal soft tissue infection, Staphylococcus aureus bacteremia, and Pneumococcal pneumonia. Additionally, it has been implicated in various types of cancer and is considered a promising biomarker of injury in patients with ischemic conditions.

## References

1. Bonaventura A. et al. (2018) J Intern Med. 283(5):476-478.
2. Kamat K. et al. (2022) Br J Cancer. 127(6):1026-1033.
3. Simats A. et al. (2018) J Intern Med. 283(5):461-475.

## Synonyms

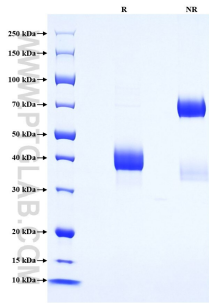
C C motif chemokine 23, C-C motif chemokine 23, CCL 23, CCL-23, CCL23(19-99)

For technical support and original validation data for this product please contact

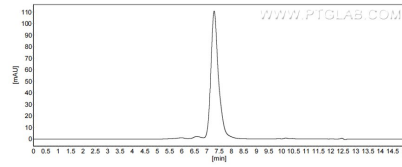
T: 1 (888) 4PTGLAB (1-888-478-4522) (toll free in USA), or 1(312) 455-8498 (outside USA) E: proteintech@ptglab.com  
W: ptglab.com

This product is exclusively available under Proteintech Group brand and is not available to purchase from any other manufacturer.

## Selected Validation Data



Purity of Recombinant Human CCL23 was determined by SDS-PAGE. The protein was resolved in an SDS-PAGE in reducing (R) and non-reducing (NR) conditions and stained using Coomassie blue.



The purity of Human CCL23 was greater than 90% as determined by SEC-HPLC.