

For Research Use Only

# Recombinant Human LHB protein (mFc Tag)



Catalog Number: Eg4252

## Basic Information

**Species:**  
Human

**Purity:**  
>90 %, SDS-PAGE

**Tag:**  
mFc Tag

## Technical Specifications

**Purity:**  
>90 %, SDS-PAGE

**Endotoxin Level:**  
<0.1 EU/μg protein, LAL method

**Source:**  
HEK293-derived Human LHB protein Ser21-Leu141 (Accession# P01229) with a mouse IgG Fc tag at the C-terminus.

**GeneID:**  
3972

**Accession:**  
P01229

**Predicted Molecular Mass:**  
39.8 kDa

**SDS-PAGE:**  
43-48 kDa, reducing (R) conditions

**Formulation:**  
Lyophilized from 0.22 μm filtered solution in PBS, pH 7.4. Normally 5% trehalose and 5% mannitol are added as protectants before lyophilization.

## Biological Activity

Not tested

## Storage and Shipping

### Storage:

It is recommended that the protein be aliquoted for optimal storage. Avoid repeated freeze-thaw cycles.

- Until expiry date, -20°C to -80°C as lyophilized proteins.
- 3 months, -20°C to -80°C under sterile conditions after reconstitution.

### Shipping:

The product is shipped at ambient temperature. Upon receipt, store it immediately at the recommended temperature.

## Reconstitution

Briefly centrifuge the tube before opening. Reconstitute at 0.1-0.5 mg/mL in sterile water.

## Background

Luteinizing hormone subunit beta, also known as LHB, is a member of the glycoprotein hormone beta chain family. It encodes the beta subunit of luteinizing hormone (LH), expressed in the pituitary gland, and promotes spermatogenesis and ovulation by stimulating the testes and ovaries to synthesize steroids. LHB is synthesized and secreted by the gonadotropes within the anterior pituitary gland. Mutations in the LHB gene are associated with hypogonadism, characterized by infertility and pseudohermaphroditism.

## References

1. Keutmann HT, et al. (1987). Proc Natl Acad Sci U S A. 84(7):2038-2042.
2. Jablonka-Shariff A, et al. (2008). J Biol Chem. 283(17):11485-11492.
- Lofrano-Porto A, et al. (2007). N Engl J Med. 357(9):897-904.

## Synonyms

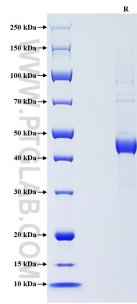
Luteinizing hormone beta, hLHB, LH B, LSH B, LSH beta

For technical support and original validation data for this product please contact

T: 1 (888) 4PTGLAB (1-888-478-4522) (toll free in USA), or 1(312) 455-8498 (outside USA) E: [proteintech@ptglab.com](mailto:proteintech@ptglab.com)  
W: [ptglab.com](http://ptglab.com)

This product is exclusively available under Proteintech Group brand and is not available to purchase from any other manufacturer.

## Selected Validation Data



Purity of Recombinant Human LHB was determined by SDS-PAGE. The protein was resolved in an SDS-PAGE in reducing (R) conditions and stained using Coomassie blue.