

For Research Use Only

Recombinant Mouse IGF2 protein (rFc Tag)



Catalog Number: Eg4527

Basic Information

Species:
Mouse

Purity:
>90 %, SDS-PAGE

Tag:
rFc Tag

Technical Specifications

Purity:

>90 %, SDS-PAGE

Endotoxin Level:

<0.1 EU/μg protein, LAL method

Source:

HEK293-derived Mouse IGF2 protein Ala25-Glu91 (Accession# P09535-1) with a rabbit IgG Fc tag at the N-terminus.

GeneID:

16002

Accession:

P09535-1

Predicted Molecular Mass:

34.6 kDa

SDS-PAGE:

33-38 kDa, reducing (R) conditions

Formulation:

Lyophilized from 0.22 μm filtered solution in PBS, pH 7.4. Normally 5% trehalose and 5% mannitol are added as protectants before lyophilization.

Biological Activity

Not tested

Storage and Shipping

Storage:

It is recommended that the protein be aliquoted for optimal storage. Avoid repeated freeze-thaw cycles.

- Until expiry date, -20°C to -80°C as lyophilized proteins.
- 3 months, -20°C to -80°C under sterile conditions after reconstitution.

Shipping:

The product is shipped at ambient temperature. Upon receipt, store it immediately at the recommended temperature.

Reconstitution

Briefly centrifuge the tube before opening. Reconstitute at 0.1-0.5 mg/mL in sterile water.

Background

Insulin-like growth factor 2 (IGF2) is a crucial protein that plays a significant role in regulating growth, particularly during normal fetal development, and is also often dysregulated during tumorigenesis. IGF2 is one of the main ligands of the type 1 IGF receptor (IGF-1R), a tyrosine kinase receptor that transmits signals upon binding with IGF-II. IGF2 is predominantly secreted via the placenta during pregnancy and, after birth, primarily by hepatocytes, with its secretion being independent of growth hormone (GH) secretion, unlike IGF-I.

References

1. Benyoucef, S. et al. (2007). *Biochem. J.* 403, 603-613.
2. Frasca, F. et al. (1999). *Mol. Cell. Biol.* 19, 3278-3288.
3. Pandini, G. et al. (2002). *J. Biol. Chem.* 277, 39684-39695.
4. Vella, V. et al. (2019). *Cells.* 8, 1017.
5. Sciacca, L. et al. (1999). *Oncogene.* 18, 2471-2479.

Synonyms

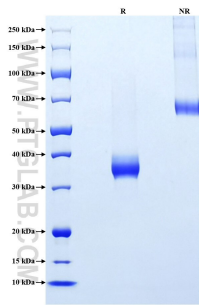
Igf2, Igf-2, IGF-II, Insulin-like growth factor II, Multiplication-stimulating polypeptide

For technical support and original validation data for this product please contact

T: 1 (888) 4PTGLAB (1-888-478-4522) (toll free in USA), or 1(312) 455-8498 (outside USA) E: proteintech@ptglab.com
W: ptglab.com

This product is exclusively available under Proteintech Group brand and is not available to purchase from any other manufacturer.

Selected Validation Data



Purity of Recombinant Mouse IGF2 was determined by SDS-PAGE. The protein was resolved in an SDS-PAGE in reducing (R) and non-reducing (NR) conditions and stained using Coomassie blue.