

For Research Use Only

# Recombinant Human Fibrinogen alpha chain protein (rFc Tag)



Catalog Number: Eg4643

## Basic Information

**Species:**  
Human

**Purity:**  
>95 %, SDS-PAGE

**Tag:**  
N-rFc

## Technical Specifications

**Purity:**

>95 %, SDS-PAGE

**Endotoxin Level:**

<0.1 EU/μg protein, LAL method

**Source:**

HEK293-derived Human Fibrinogen alpha chain protein Lys620-Gln866 (Accession# P02671-1) with a rabbit IgG Fc tag at the N-terminus

**GeneID:**

2243

**Accession:**

P02671-1

**Predicted Molecular Mass:**

58.0 kDa

**SDS-PAGE:**

60-65 kDa, reducing (R) condition

**Formulation:**

Lyophilized from 0.22 μm filtered solution in PBS, pH 7.4. Normally 5% trehalose and 5% mannitol are added as protectants before lyophilization.

## Biological Activity

Not tested

## Storage and Shipping

**Storage:**

It is recommended that the protein be aliquoted for optimal storage. Avoid repeated freeze-thaw cycles.

- Until expiry date, -20°C to -80°C as lyophilized proteins.
- 3 months, -20°C to -80°C under sterile conditions after reconstitution.

**Shipping:**

The product is shipped at ambient temperature. Upon receipt, store it immediately at the recommended temperature.

## Reconstitution

Briefly centrifuge the tube before opening. Reconstitute at 0.1-0.5 mg/mL in sterile water.

## Background

Fibrinogen is a soluble plasma glycoprotein synthesized in the liver. It is composed of two sets of three structurally different subunits: alpha (FGA), beta (FGB), gamma (FGG). FGA (Fibrinogen alpha chain) is the alpha chain of fibrinogen. During conversion of fibrinogen to fibrin, fibrinopeptide A is cleaved from FGA by thrombin. The knockout of fibrinogen alpha chain Knockout can promote tumor growth and metastasis through Integrin-AKT signaling pathway in lung cancer.

## References

1. Litvinov RI, et al. (2021). Subcell Biochem. 96:471-501.
2. Han X, et al. (2024). Aging (Albany NY). 16(19):12806-12819.
3. Wang M, et al. (2020). Mol Cancer Res. 18(7):943-954.

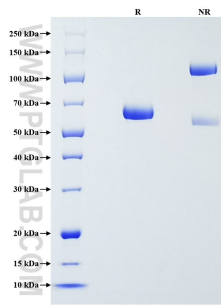
## Synonyms

For technical support and original validation data for this product please contact

T: 1 (888) 4PTGLAB (1-888-478-4522) (toll free in USA), or 1(312) 455-8498 (outside USA) E: proteintech@ptglab.com  
W: ptglab.com

This product is exclusively available under Proteintech Group brand and is not available to purchase from any other manufacturer.

## Selected Validation Data



Purity of Recombinant Human Fibrinogen alpha chain was determined by SDS-PAGE. The protein was resolved in an SDS-PAGE in reducing (R) and non-reducing (NR) conditions and stained using Coomassie blue.