

For Research Use Only

# Recombinant Human LILRA1 protein (His Tag)



Catalog Number: Eg4704

## Basic Information

**Species:**  
Human

**Purity:**  
>90 %, SDS-PAGE

**Tag:**  
His Tag

## Technical Specifications

**Purity:**

>90 %, SDS-PAGE

**Endotoxin Level:**

<0.1 EU/μg protein, LAL method

**Source:**

HEK293-derived Human LILRA1 protein Pro17-Asn461 (Accession# O75019-1) with a His tag at the C-terminus.

**GeneID:**

11024

**Accession:**

O75019-1

**Predicted Molecular Mass:**

49.6 kDa

**SDS-PAGE:**

60-75kDa, reducing (R) conditions

**Formulation:**

Lyophilized from 0.22 μm filtered solution in PBS, pH 7.4. Normally 5% trehalose and 5% mannitol are added as protectants before lyophilization.

## Biological Activity

Not tested

## Storage and Shipping

**Storage:**

It is recommended that the protein be aliquoted for optimal storage. Avoid repeated freeze-thaw cycles.

- Until expiry date, -20°C to -80°C as lyophilized proteins.
- 3 months, -20°C to -80°C under sterile conditions after reconstitution.

**Shipping:**

The product is shipped at ambient temperature. Upon receipt, store it immediately at the recommended temperature.

## Reconstitution

Briefly centrifuge the tube before opening. Reconstitute at 0.1-0.5 mg/mL in sterile water.

## Background

Leukocyte immunoglobulin-like receptor A1 (LILRA1) plays a significant role in the immune system. It is part of the leukocyte immunoglobulin-like receptor (LIR) family. The LILRA1 is predominantly expressed in B cells, where it interacts with major histocompatibility complex class I ligands and contributes to the regulation of immune responses. LILRA1 is involved in various pathways, including the innate immune system and Class I MHC-mediated antigen processing and presentation. It is known to have multiple functions, such as acting as a receptor for class I MHC antigens and potentially playing a role in the recognition and modulation of immune responses.

## References

1. Tedla N. et al. (2011). *Tissue Antigens*. 77(4):305-316.
2. Hogan LE. et al. (2016). *Sci Rep*. 6(1):21780.
3. Hirayasu K. et al. (2015). *J Hum Genet*. 60(11):703-708.
4. An H. et al. (2010). *J Rheumatol*. 37(8):1596-1606.

## Synonyms

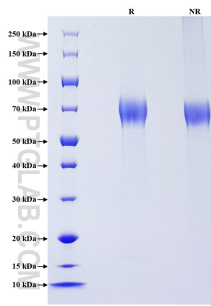
CD85 antigen-like family member I, CD85i, Leukocyte immunoglobulin-like receptor 6, Leukocyte immunoglobulin-like receptor subfamily A member 1, LIR6

### For technical support and original validation data for this product please contact

T: 1 (888) 4PTGLAB (1-888-478-4522) (toll free in USA), or 1(312) 455-8498 (outside USA) E: [proteintech@ptglab.com](mailto:proteintech@ptglab.com)  
W: [ptglab.com](http://ptglab.com)

**This product is exclusively available under Proteintech Group brand and is not available to purchase from any other manufacturer.**

## Selected Validation Data



Purity of Recombinant Human LILRA1 was determined by SDS-PAGE. The protein was resolved in an SDS-PAGE in reducing (R) and non-reducing (NR) conditions and stained using Coomassie blue.