

For Research Use Only

Recombinant Human CCL8/MCP-2 protein (rFc Tag)(HPLC verified)



Catalog Number: Eg5089

Basic Information

Species:
Human

Purity:
>90 %, SDS-PAGE
>90%, SEC-HPLC

Tag:
rFc Tag

Technical Specifications

Purity:
>90 %, SDS-PAGE
>90%, SEC-HPLC

Endotoxin Level:
<0.1 EU/μg protein, LAL method

Source:
HEK293-derived Human CCL8 protein Gln24-Pro99 (Accession# P80075) with a rabbit IgG Fc tag at the C-terminus.

GeneID:
6355

Accession:
P80075

Predicted Molecular Mass:
35.2 kDa

SDS-PAGE:
35-40 kDa, reducing (R) conditions

Formulation:
Lyophilized from 0.22 μm filtered solution in PBS, pH 7.4. Normally 5% trehalose and 5% mannitol are added as protectants before lyophilization.

Biological Activity

Not tested

Storage and Shipping

Storage:

It is recommended that the protein be aliquoted for optimal storage. Avoid repeated freeze-thaw cycles.

- Until expiry date, -20°C to -80°C as lyophilized proteins.
- 3 months, -20°C to -80°C under sterile conditions after reconstitution.

Shipping:

The product is shipped at ambient temperature. Upon receipt, store it immediately at the recommended temperature.

Reconstitution

Briefly centrifuge the tube before opening. Reconstitute at 0.1-0.5 mg/mL in sterile water.

Background

CCL8 (also known as MCP2) is implicated in various inflammatory processes. In bone marrow transplantation, circulating CCL8 levels positively correlate with severity of graft-versus-host disease.

References

1. Vilgelm AE, et al. (2019). *Front Immunol.* 10: 333.
2. Yamamoto M, et al. (2011). *Exp Hematol.* 39: 1101–1112.
3. Klementowicz JE, et al. (2017). *J Immunol.* 199: 27–32.
4. Hori T, et al. (2008). *Blood*, 111: 4403–4412.

Synonyms

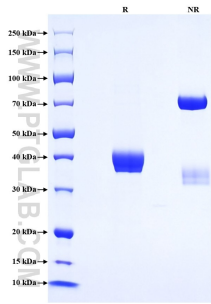
CCL8, CCL8, MCP2, C C motif chemokine 8, C-C motif chemokine 8, CCL 8

For technical support and original validation data for this product please contact

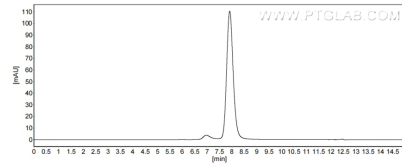
T: 1 (888) 4PTGLAB (1-888-478-4522) (toll free in USA), or 1(312) 455-8498 (outside USA) E: proteintech@ptglab.com
W: ptglab.com

This product is exclusively available under Proteintech Group brand and is not available to purchase from any other manufacturer.

Selected Validation Data



Purity of Recombinant Human CCL8 was determined by SDS-PAGE. The protein was resolved in an SDS-PAGE in reducing (R) and non-reducing (NR) conditions and stained using Coomassie blue.



The purity of Human CCL8/MCP-2 was greater than 90% as determined by SEC-HPLC.