

For Research Use Only

FITC-conjugated Rabbit IgG control Polyclonal antibody

Catalog Number: FITC-30000

2 Publications



Basic Information

Catalog Number:

FITC-30000

GenBank Accession Number:

GeneID (NCBI):

Purification Method:

N/A

Size:

100ul , Concentration: 1000 ug/ml by
Nanodrop;

Full Name:

Excitation/Emission maxima
wavelengths:

498 nm / 526 nm

Source:

Rabbit

Isotype:

IgG

Applications

Tested Applications:

FC (Intra)

Species Specificity:

n/a

Background Information

This product is Normal rabbit IgG (without immunized) which purified with Protein A. Normal Rabbit IgG is an isotype control antibody, which is used to estimate the non-specific binding of target primary antibodies due to Fc receptor binding or other protein-protein interactions. An isotype control antibody should have the same immunoglobulin type and be used at the same concentration as the test antibody.

Notable Publications

Author	Pubmed ID	Journal	Application
Shabnam Zaman	38987280	Nat Commun	
Lili Tian	37733916	Virulence	

Storage

Storage:

Store at -20°C. Avoid exposure to light. Stable for one year after shipment.

Storage Buffer:

PBS with 50% Glycerol, 0.05% Proclin300, 0.5% BSA, pH 7.3.

Aliquoting is unnecessary for -20°C storage

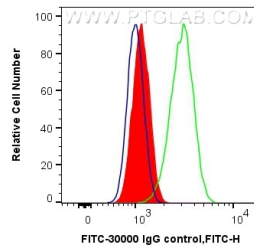
For technical support and original validation data for this product please contact:

T: 1 (888) 4PTGLAB (1-888-478-4522) (toll free
in USA), or 1(312) 455-8498 (outside USA)

E: proteintech@ptglab.com
W: ptglab.com

This product is exclusively available under Proteintech Group brand and is not available to purchase from any other manufacturer.

Selected Validation Data



1X10⁶ HeLa cells were intracellularly stained with 0.4 ug FITC Anti-Rabbit IgG control (FITC-30000) (red), or 0.4 ug FITC-conjugated ATF4 Rabbit PolyAb (FITC-10835) (green). Cells were fixed with 4% PFA and permeabilized with Flow Cytometry Perm Buffer (PF00011-C).