

FITC Plus Anti-Human CD107a / LAMP1 (H4A3)

Catalog Number: **FITC-65051**

Basic Information

Catalog Number: FITC-65051	GenBank Accession Number: BC006345	Purification Method: Affinity purification
Size: 100tests , 5 µl/test	GeneID (NCBI): 3916	CloneNo.: H4A3
Source: Mouse	ENSEMBL Gene ID: ENSG00000185896	Recommended Dilutions: IF/ICC 1:50-1:500
Isotype: IgG1, kappa	UNIPROT ID: P11279	Excitation/Emission maxima wavelengths: 495 nm / 524 nm
	Full Name: lysosomal-associated membrane protein 1	

Applications

Tested Applications: FC, IF/ICC, FC (Intra)	Positive Controls: IF/ICC : HeLa cells,
Species Specificity: Human	

Background Information

LAMP1 (CD107a) is a heavily glycosylated membrane protein enriched in the lysosomal membrane. LAMP1 is extensively glycosylated with asparagine-linked oligosaccharides which protect it from intracellular proteolysis (PMID: 10521503). Although LAMP1 is expressed largely in the endosome-lysosomal membrane of cells, it is also found on the plasma membrane (PMID: 16168398). Elevated LAMP1 expression at the cell surface has also been detected during platelet and granulocytic cell activation, as well as in some tumor cells (PMID: 29085473). LAMP1 functions to provide selectins with carbohydrate ligands. This protein has also been shown to be a marker of degranulation on lymphocytes such as CD8+ and NK cells and may also play a role in tumor cell differentiation and metastasis (PMID: 18835598; 29085473; 9426697).

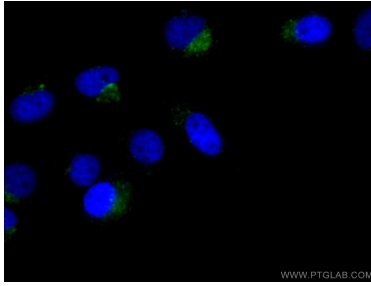
Storage

Storage:
Store at 2-8°C. Avoid exposure to light. Stable for one year after shipment.
Storage Buffer:
PBS with 0.09% sodium azide and 0.5% BSA.

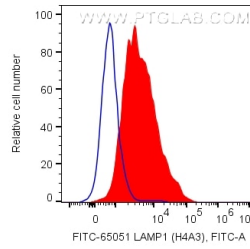
For technical support and original validation data for this product please contact:
T: 1 (888) 4PTGLAB (1-888-478-4522) (toll free in USA), or 1(312) 455-8498 (outside USA)
E: proteintech@ptglab.com
W: ptglab.com

This product is exclusively available under Proteintech Group brand and is not available to purchase from any other manufacturer.

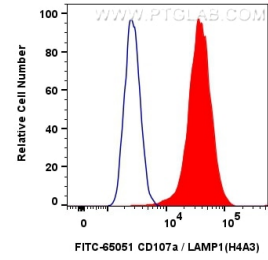
Selected Validation Data



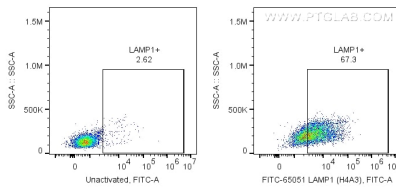
Immunofluorescent analysis of (4% PFA) fixed HeLa cells using FITC-65051 (CD107a antibody) at dilution of 1:50 and CoraLite488-Conjugated AffiniPure Goat Anti-Mouse IgG(H+L).



1X10⁶ PHA-activated human PBMCs were surface stained with 5 ul FITC Plus Plus Anti-Human CD107a (FITC-65051, Clone: H4A3). Unactivated PBMCs were used as negative control. Cells were not fixed. Lymphocytes were gated.



1x10⁶ HeLa cells were intracellularly stained with 10 ul FITC Plus Anti-Human CD107a / LAMP1 (H4A3) (FITC-65051, Clone:H4A3)(red), or 10 ul FITC Plus Mouse IgG1 Isotype Control (MOPC-21) (FITC-65124, Clone: MOPC-21) (blue). Cells were fixed with 4% PFA and permeabilized with Flow Cytometry Perm Buffer (PF00011-C).



1X10⁶ PHA-activated human PBMCs were surface stained with 5 ul FITC Plus Plus Anti-Human CD107a (FITC-65051, Clone: H4A3). Unactivated PBMCs were used as negative control. Cells were not fixed. Lymphocytes were gated.