

For Research Use Only

# FITC Anti-Mouse Ly-6G (1A8)

Catalog Number: FITC-65078



## Basic Information

<b>Catalog Number:</b> FITC-65078	<b>GenBank Accession Number:</b> X70920	<b>Purification Method:</b> Affinity purification
<b>Size:</b> 100ug, 0.5 mg/ml	<b>GeneID (NCBI):</b> 546644	<b>CloneNo.:</b> 1A8
<b>Source:</b> Rat	<b>Full Name:</b> lymphocyte antigen 6 complex, locus G	<b>Excitation/Emission maxima wavelengths:</b> 494 nm / 520 nm
<b>Isotype:</b> IgG2a, kappa		

## Applications

**Tested Applications:**  
FC

**Species Specificity:**  
Mouse

## Background Information

Ly-6G (lymphocyte antigen 6 complex, locus G), also known as Gr-1, is a 21-25 kDa, glycosylphosphatidylinositol-anchored protein expressed on myeloid lineage cells in mouse bone marrow (PMID: 8360469). The expression of Ly-6G increases on neutrophils as they differentiate from immature cells in the bone marrow to mature cells in the blood and spleen (PMID: 8890901). Antibodies targeting Ly6G (RB6-8C5 or 1A8) are commonly used in studies aimed at identifying the role of neutrophils (PMID: 23543767). The 1A8 mAb is specific for Ly-6G (PMID: 8360469).

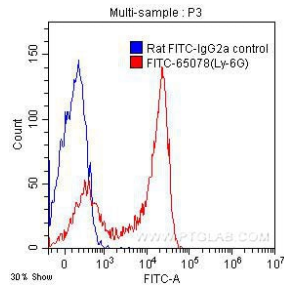
## Storage

**Storage:**  
Store at 2-8°C. Avoid exposure to light. Stable for one year after shipment.  
**Storage Buffer:**  
Phosphate based buffer with 0.09% sodium azide and 0.1% gelatin, pH 7.2.

For technical support and original validation data for this product please contact:  
T: 1 (888) 4PTGLAB (1-888-478-4522) (toll free in USA), or 1(312) 455-8498 (outside USA) E: proteintech@ptglab.com W: ptglab.com

This product is exclusively available under Proteintech Group brand and is not available to purchase from any other manufacturer.

## Selected Validation Data



1X10<sup>6</sup> C57BL/6 mouse bone marrow cells were surface stained with 0.20 ug FITC-Anti-Mouse Ly-6G (FITC-65078, clone 1A8) (red) or 0.20 ug FITC-rat IgG2a isotype control (blue). Cells were not fixed.