

For Research Use Only

FITC Anti-Human CD161 (HP-3G10)

Catalog Number: FITC-65115

1 Publications



Basic Information

Catalog Number:

FITC-65115

Size:

100 tests, 5 µl/test

Source:

Mouse

Isotype:

IgG1, kappa

GenBank Accession Number:

BC114516

GeneID (NCBI):

3820

ENSEMBL Gene ID:

ENSG00000111796

UNIPROT ID:

Q12918

Full Name:

killer cell lectin-like receptor
subfamily B, member 1

Calculated MW:

225 aa, 25 kDa

Purification Method:

Affinity purification

CloneNo.:

HP-3G10

Excitation/Emission maxima
wavelengths:

498 nm / 526 nm

Applications

Tested Applications:

FC

Species Specificity:

Human

Background Information

CD161, also known as KLRB1 or NKR-P1A, is a type II transmembrane C-type lectin-like receptor and is expressed on the cell membrane as disulfide-linked homodimer (PMID: 8077657). It is expressed by the majority of NK cells and subsets of peripheral T cells, including both CD4+ and CD8+ T cells, and is expressed preferentially on adult T cells with a "memory" antigenic phenotype (PMID: 8077657; 22566826). Expression of CD161 correlates with the cytotoxic function of CD16+ NK cells, and ligation of CD161 with its ligand LLT1 inhibits NK cell cytotoxicity and cytokine secretion (PMID: 29686665).

Notable Publications

Author	Pubmed ID	Journal	Application
Zhenguang Zhang	39729425	Anal Chem	

Storage

Storage:

Store at 2-8°C. Avoid exposure to light. Stable for one year after shipment.

Storage Buffer:

Phosphate based buffer with 0.09% sodium azide and 0.1% gelatin, pH 7.2.

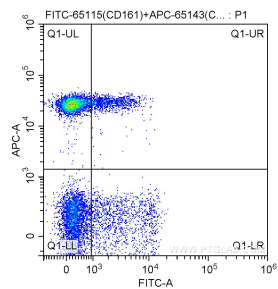
For technical support and original validation data for this product please contact:

T: 1 (888) 4PTGLAB (1-888-478-4522) (toll free
in USA), or 1(312) 455-8498 (outside USA)

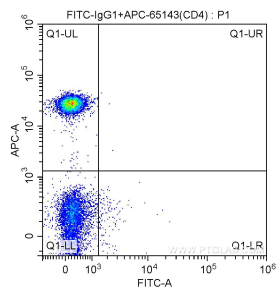
E: proteintech@ptglab.com
W: ptglab.com

This product is exclusively available under Proteintech Group brand and is not available to purchase from any other manufacturer.

Selected Validation Data



1X10⁶ human peripheral blood lymphocytes were surface stained with 0.50 ug APC Anti-Human CD4 (APC-65143, Clone: RPA-T4) and 0.50 ug FITC Anti-Human CD161 (FITC-65115, Clone: HP-3G10). Cells were not fixed.



1X10⁶ human peripheral blood lymphocytes were surface stained with 0.50 ug APC Anti-Human CD4 (APC-65143, Clone: RPA-T4) and 0.50 ug FITC-mouse IgG1 isotype control. Cells were not fixed.